

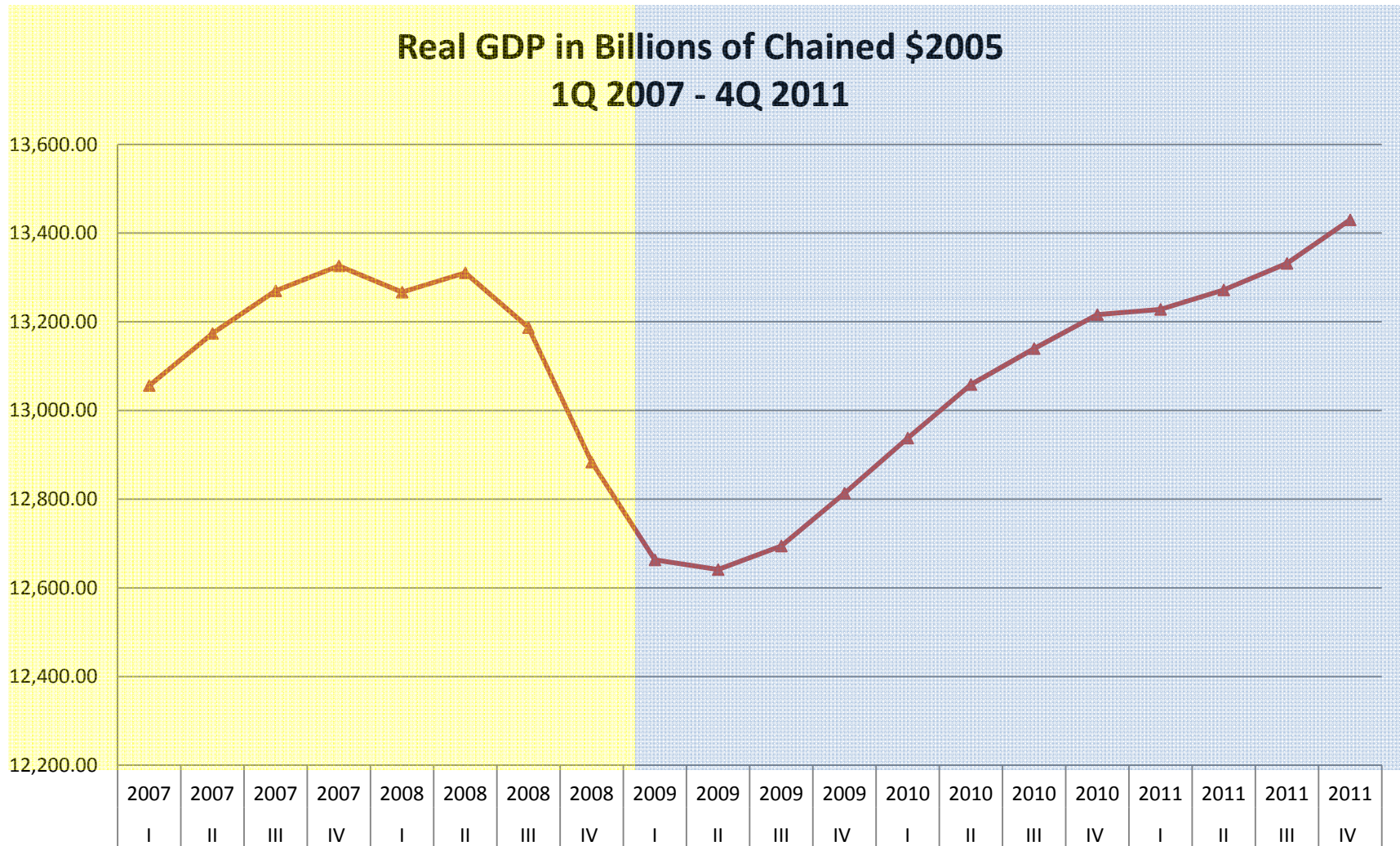
The State of the US Economy

March 2012 Edition

Presentation to: Community Congregational United
Church of Christ in Chula Vista
March 14, 2012

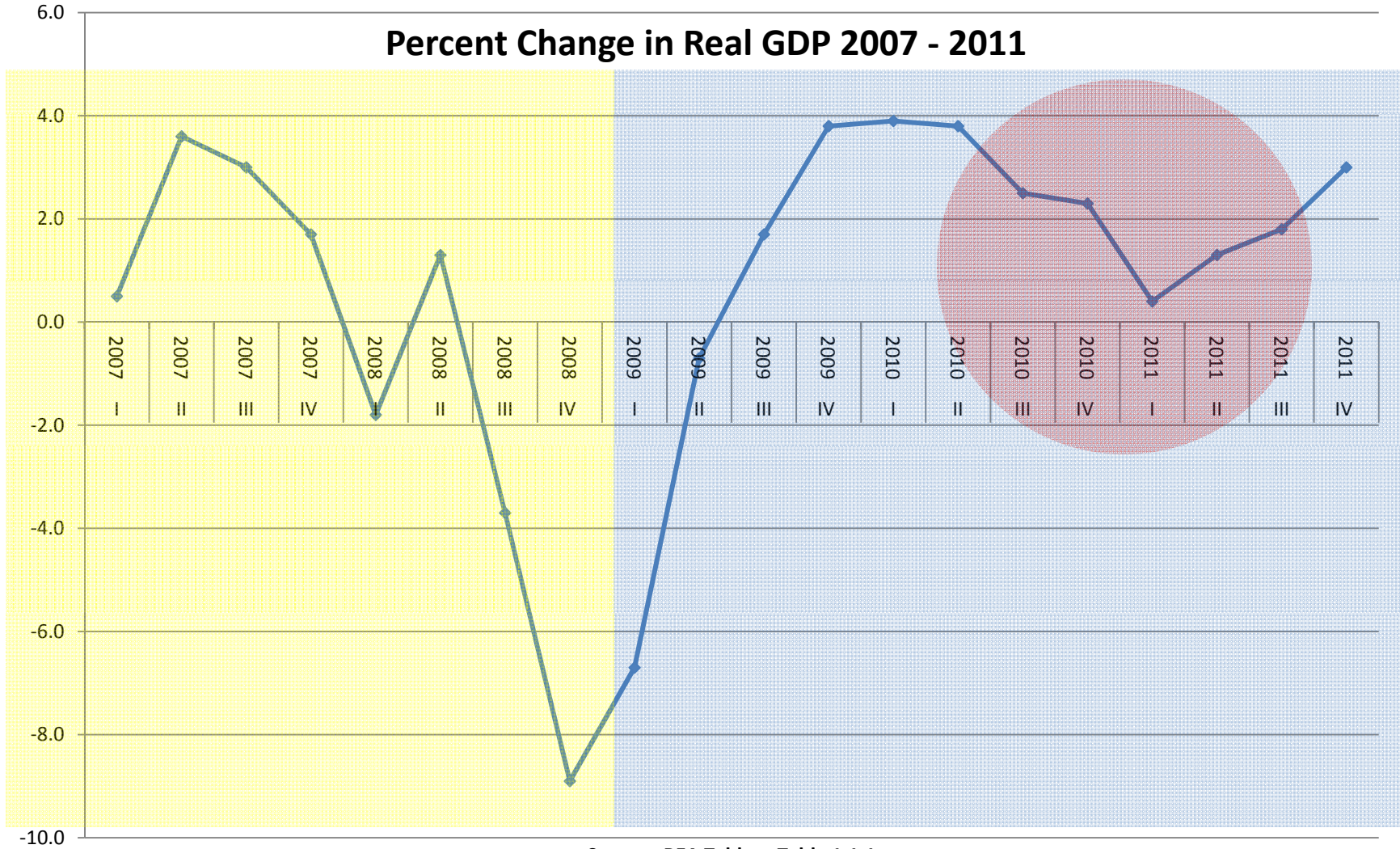
Stephen J. Conroy, Ph.D.
Professor of Economics
School of Business Administration
University of San Diego

Real Output of U.S. Economy



Source: BEA Tables: Table 1.1.6 Real Gross Domestic Product, Chained Dollars

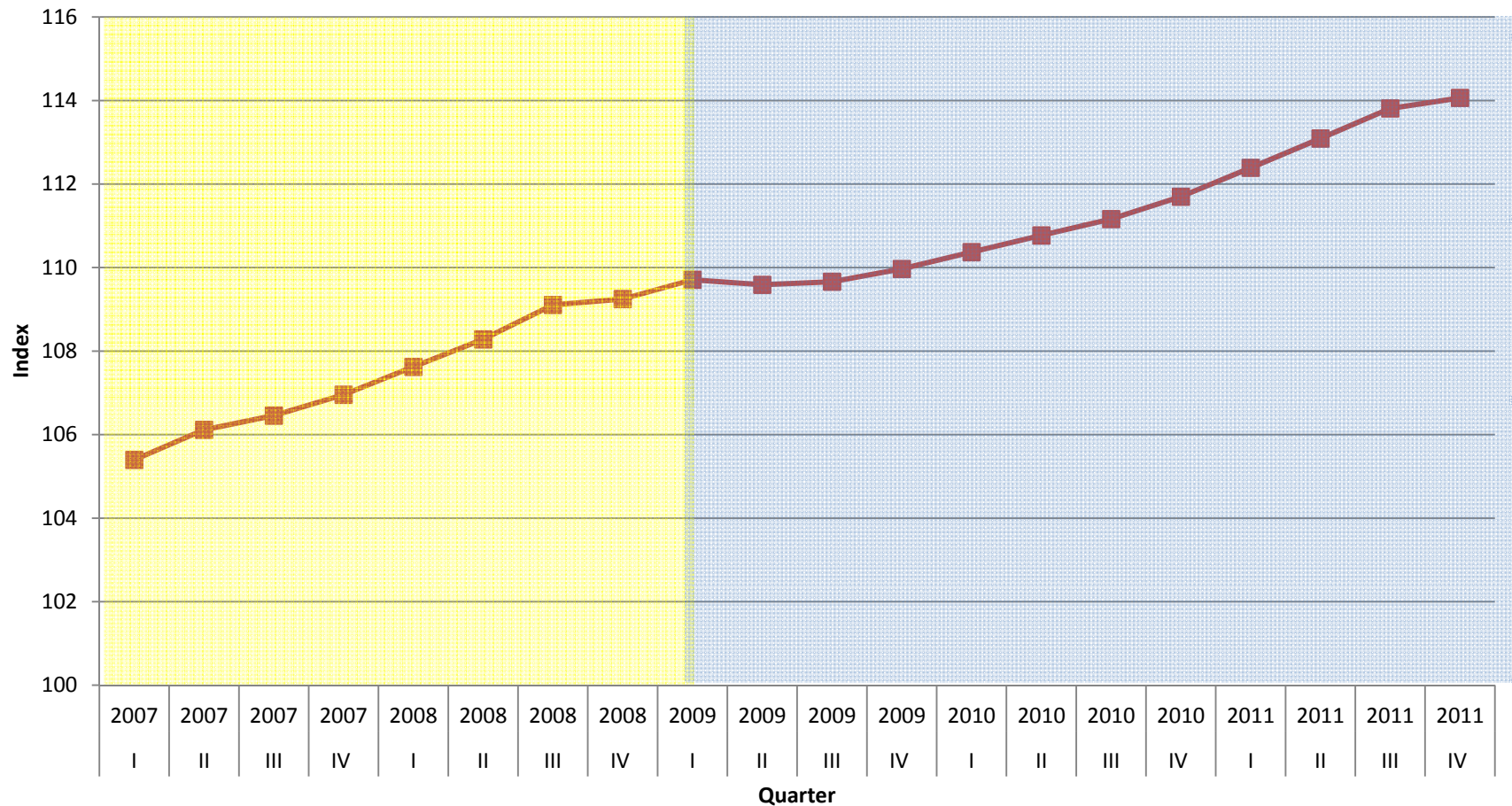
Growth Rate of U.S. Economy



Source: BEA Tables: Table 1.1.1

Inflation

GDP Price Index (Base Year 2005)

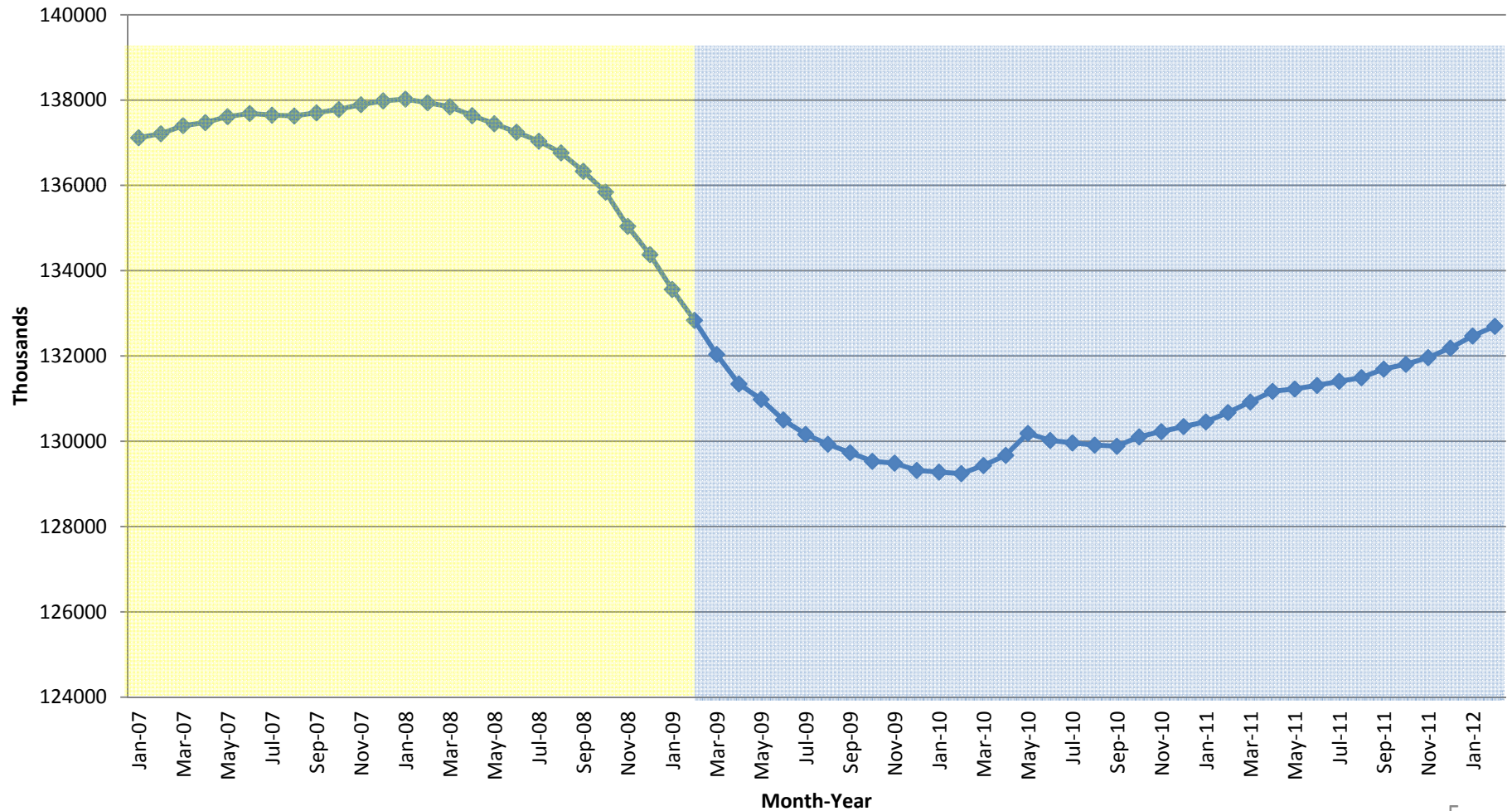


Source: BEA Table 1.1.4

Ave. Annual Inflation for **2007 – 2011**: 1.6%; Ave. Annual Inflation for **1970 – 2011**: 3.7%

Jobs

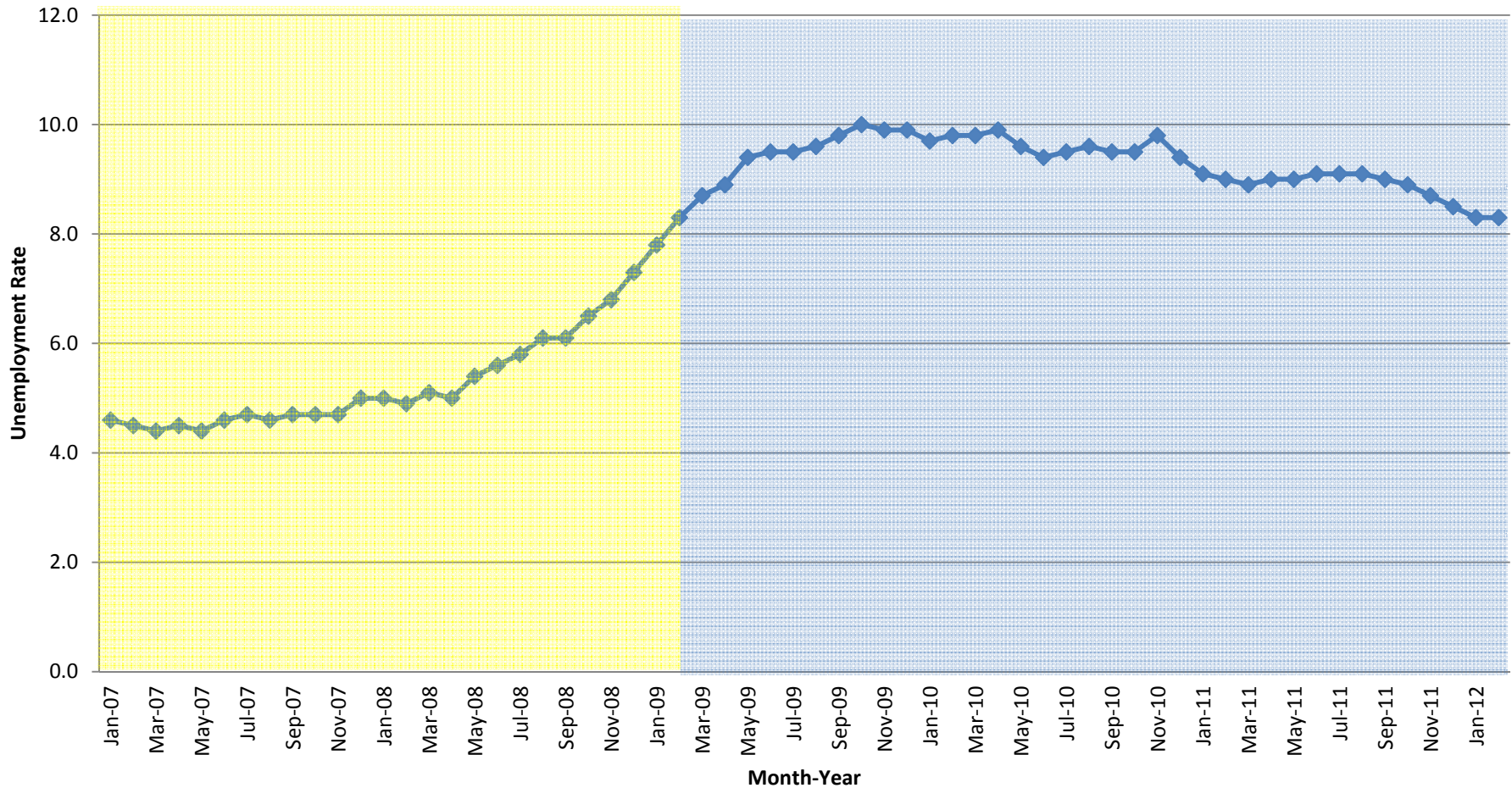
Nonfarm Employment ,
Jan. 2007 - Feb. 2012



Source: BLS, Series I.D. CES0000000001

Unemployment Rate

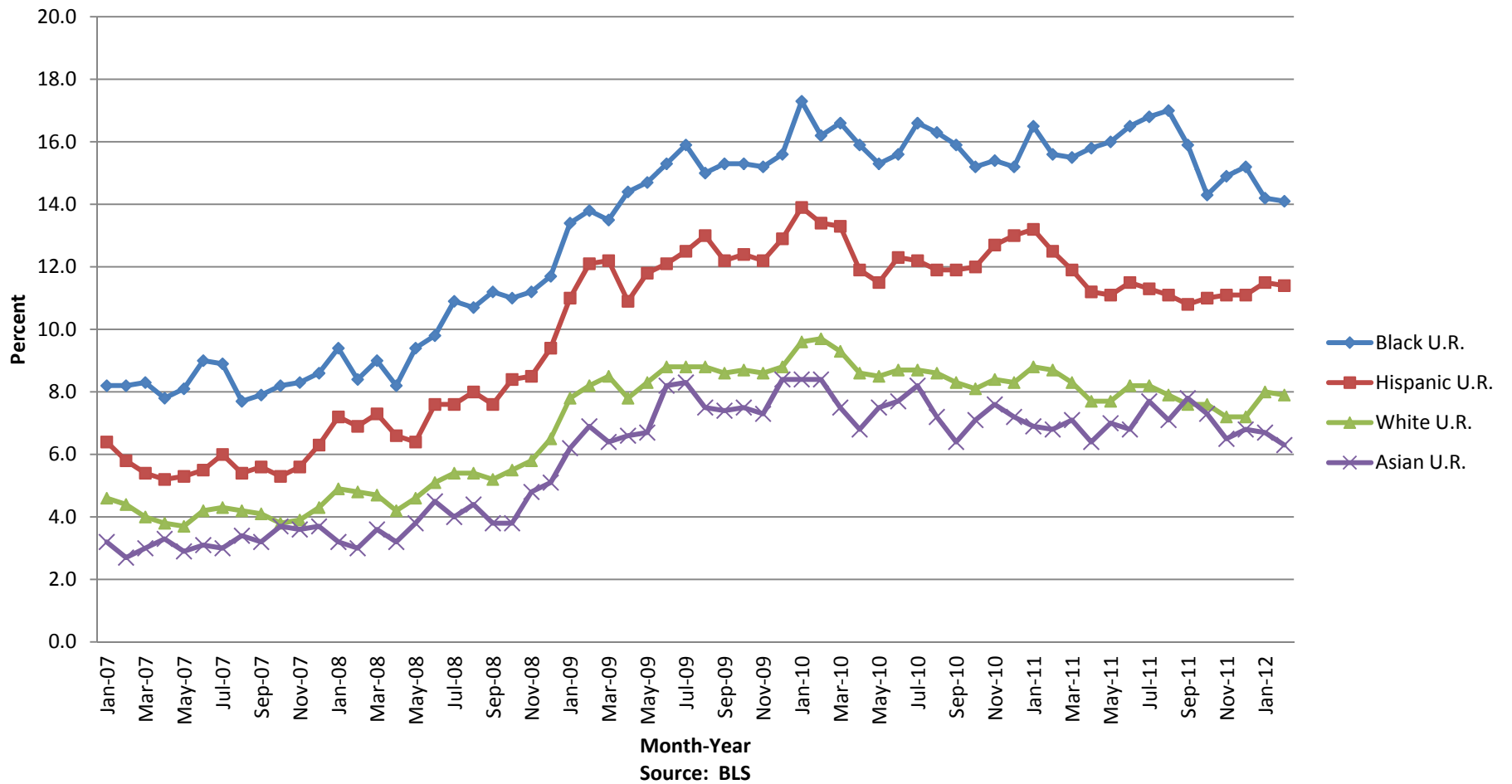
U.S. Unemployment Rate,
Jan. 2007 - Feb. 2012



Source: BLS, LNS14000000

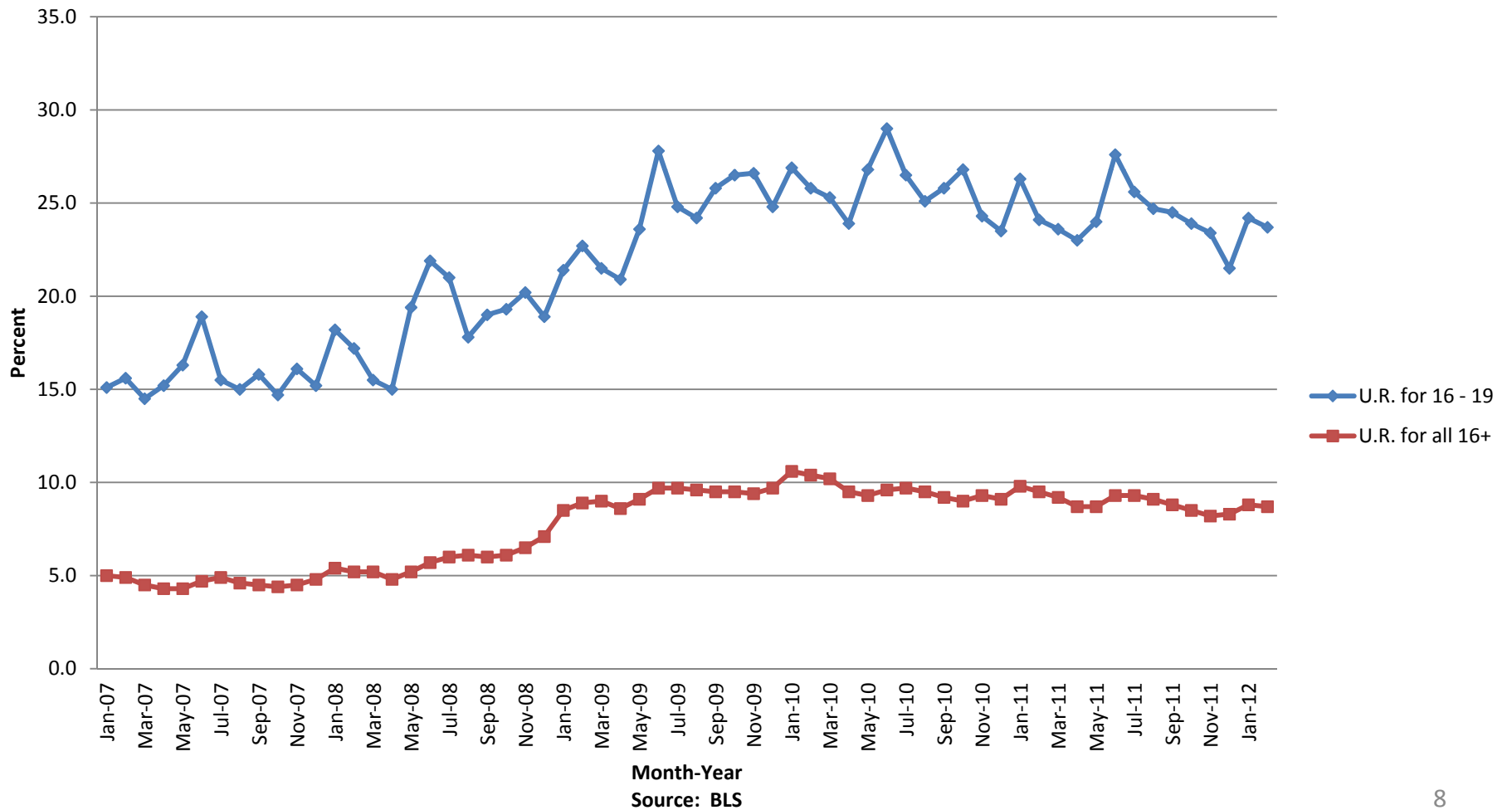
Unemployment Rates by Race/Ethnicity

Unemployment Rate for Persons 16+ by Race/Ethnicity



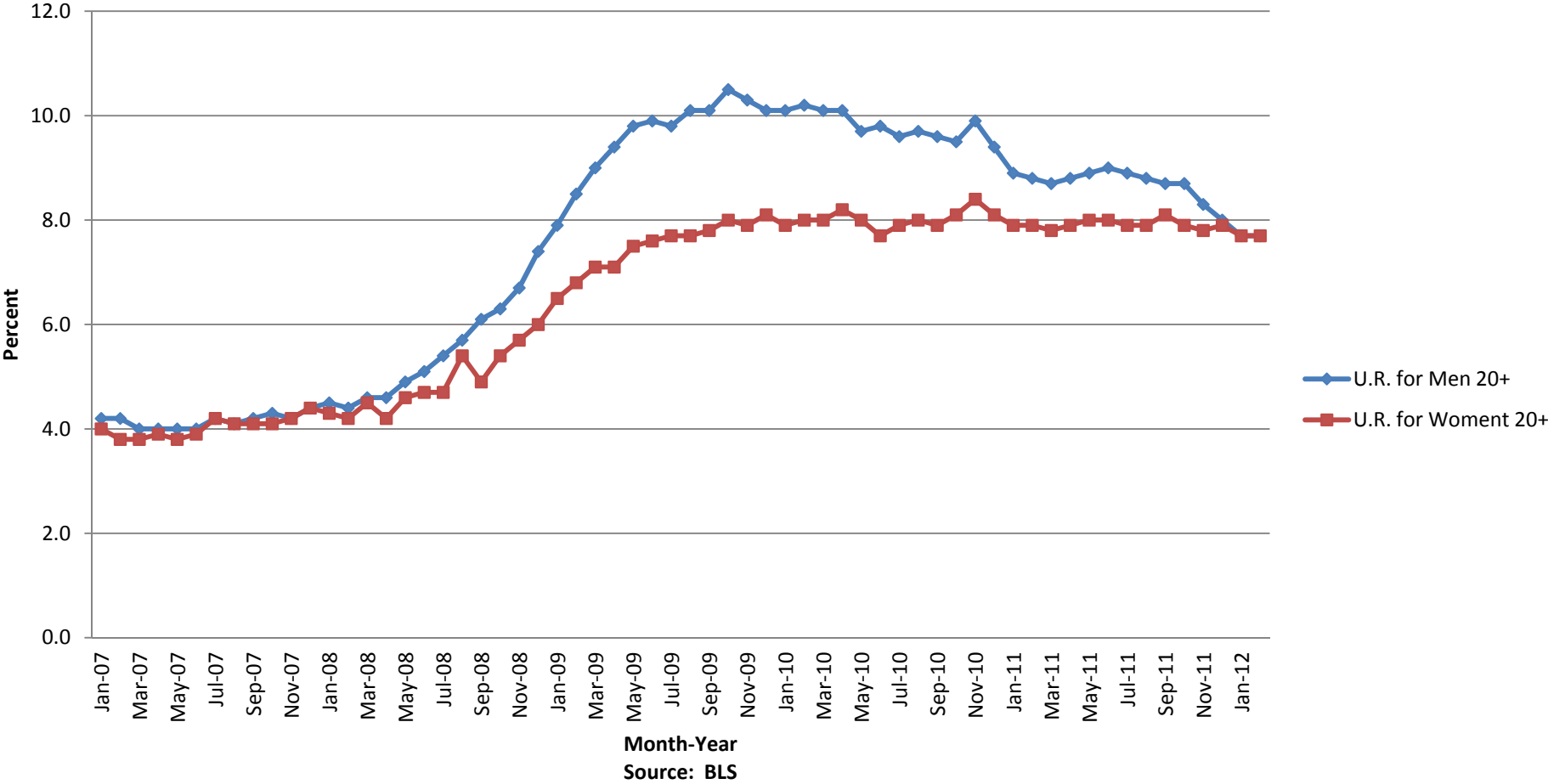
Unemployment Rates for Youth vs. Total U.S. Pop. 16+

Youth and Total Unemployment Rate



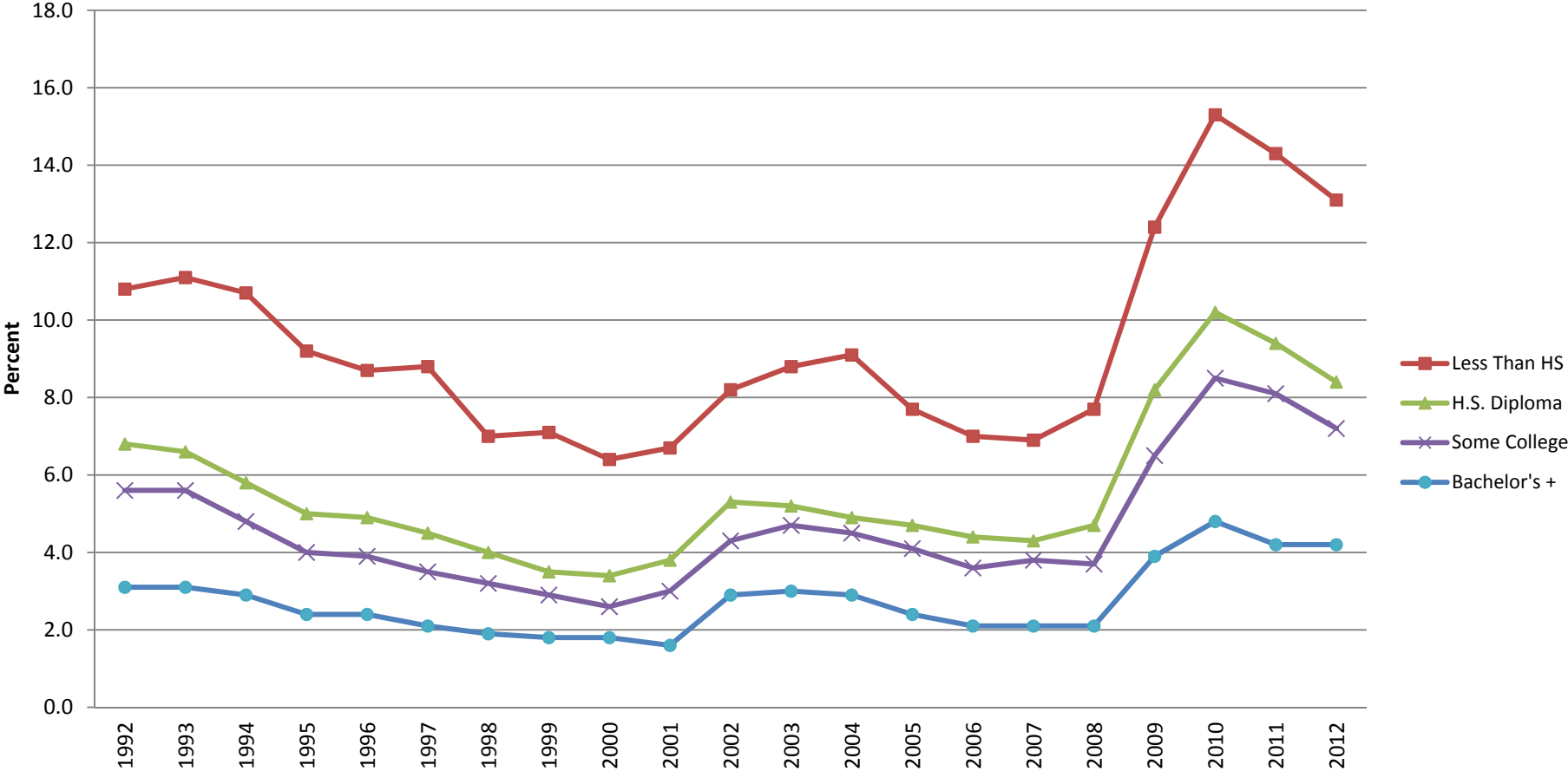
Unemployment Rates by Gender

Unemployment Rates by Gender



Unemployment Rates by Educational Attainment

January Unemployment Rate for 25 Years and Over,
by Educational Attainment, 1992 – 2012

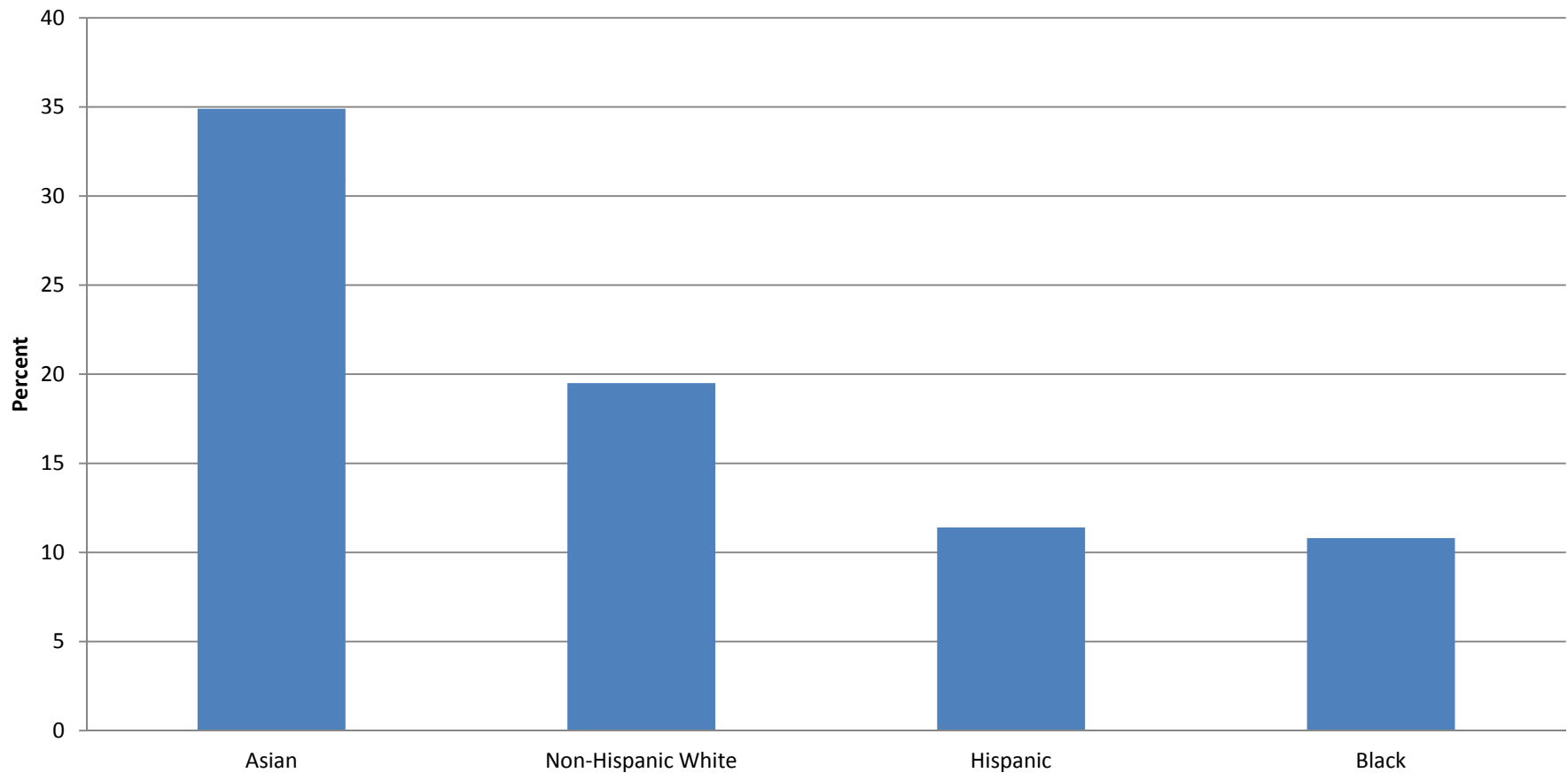


Values are Seasonally Adj. for January of Each Year

Source: BLS, from CPS, accessed 2/24/12

Educational Attainment by Race/Ethnicity—Bachelor's

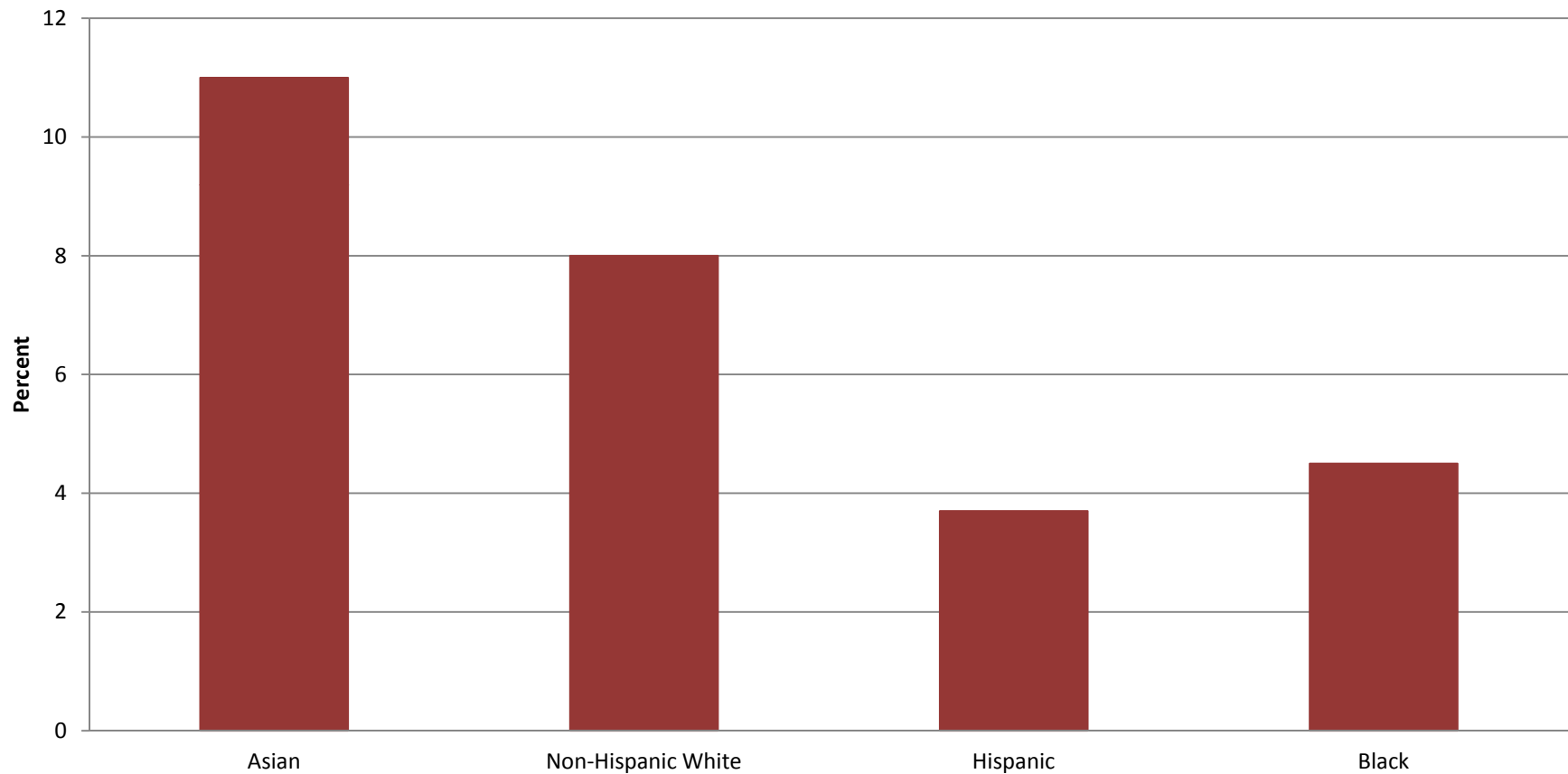
Percent of Population with Bachelor's Degree



Source: *Educational Attainment in the United States: 2009*, Table 1, U.S. Census Bureau
Note: Categories are for Asian alone, N-H White alone, Black alone, Hispanic of any race.

Educational Attainment by Race/Ethnicity—Master's

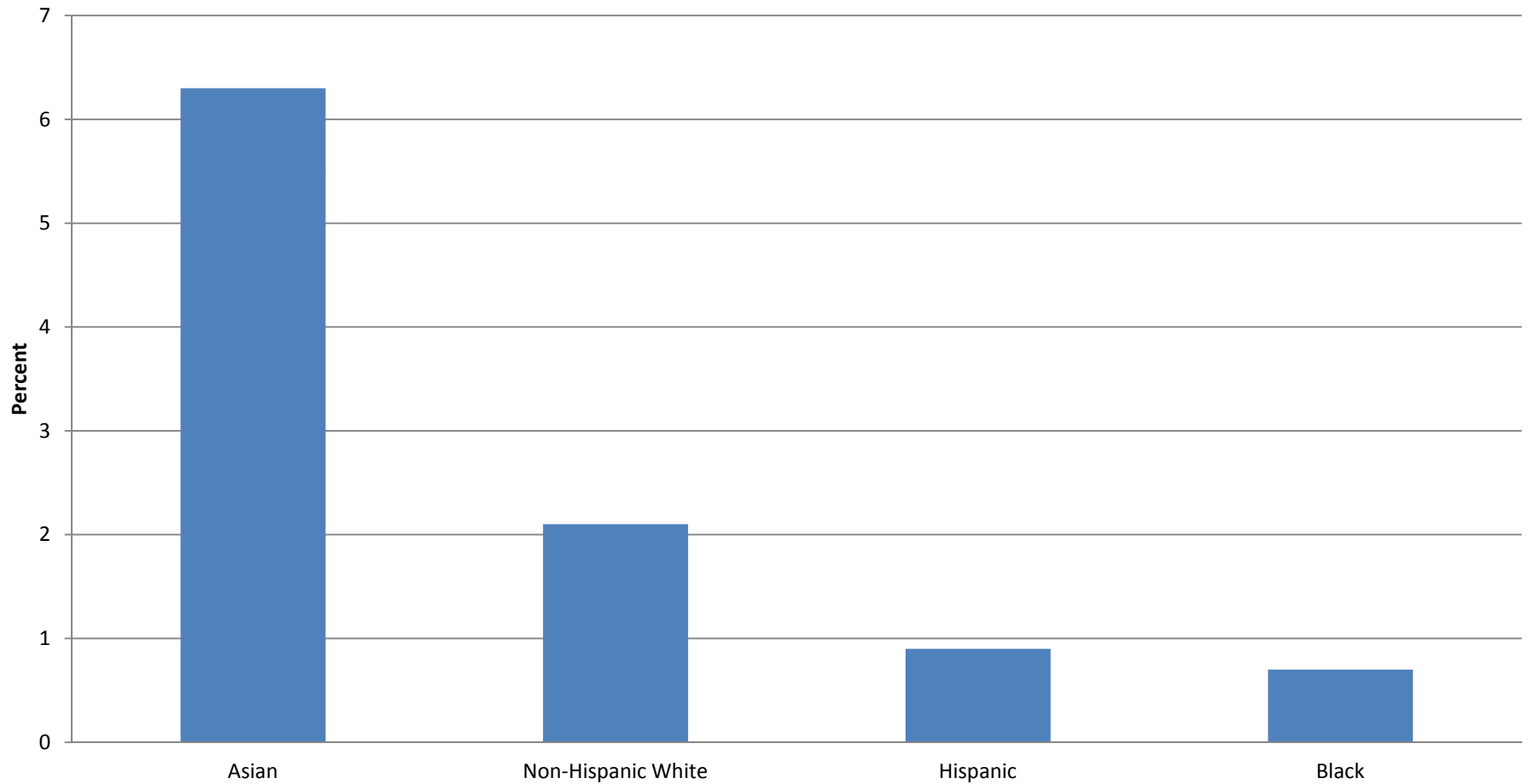
Percent of Population with Master's Degree



Source: *Educational Attainment in the United States: 2009*, Table 1, U.S. Census Bureau
Note: Categories are for Asian alone, N-H White alone, Black alone, Hispanic of any race.

Educational Attainment by Race/Ethnicity—Professional Degree

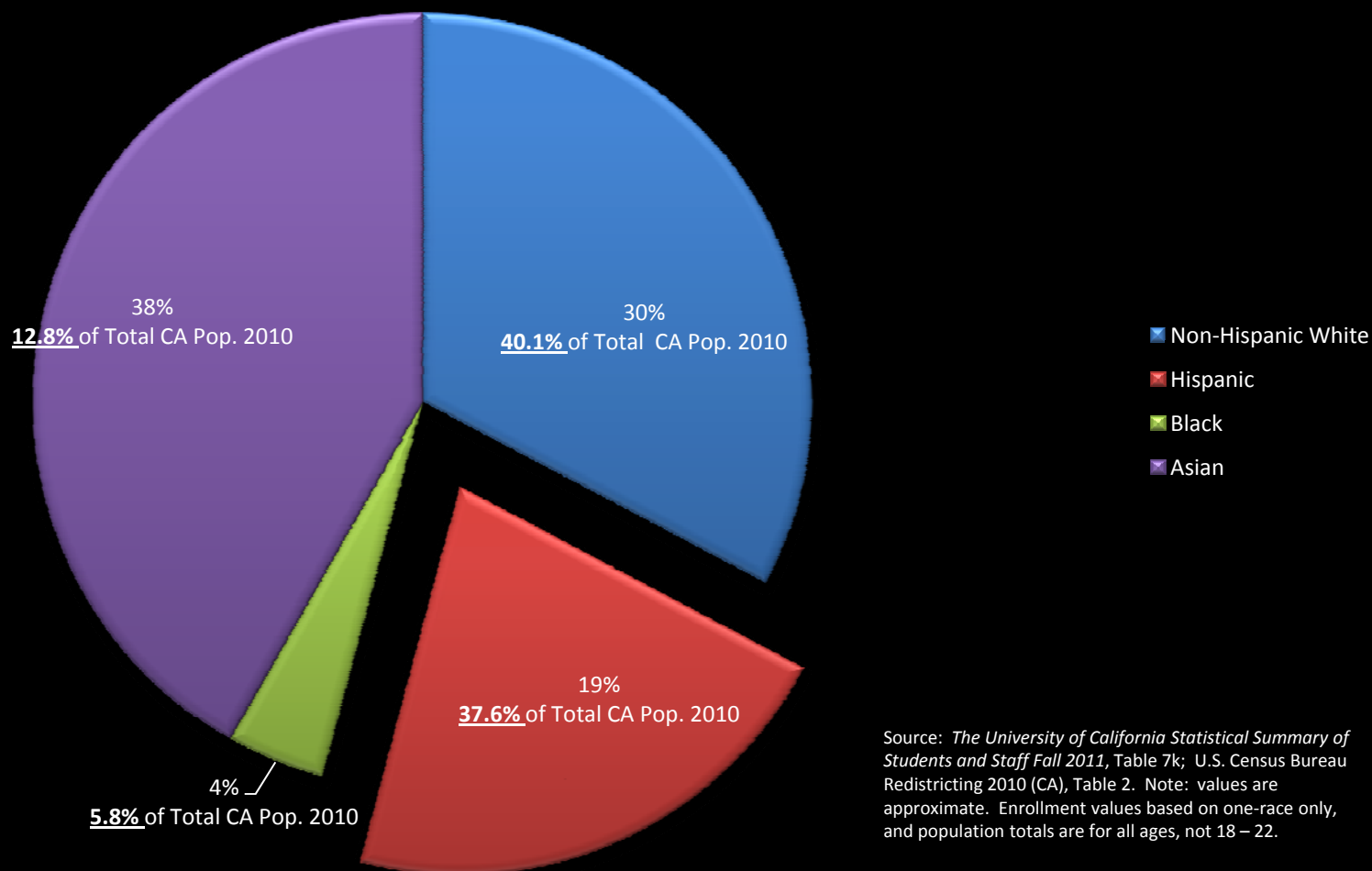
Percent of Population with Professional Degree



Source: *Educational Attainment in the United States: 2009*, Table 1, U.S. Census Bureau
Note: Categories are for Asian alone, N-H White alone, Black alone, Hispanic of any race.

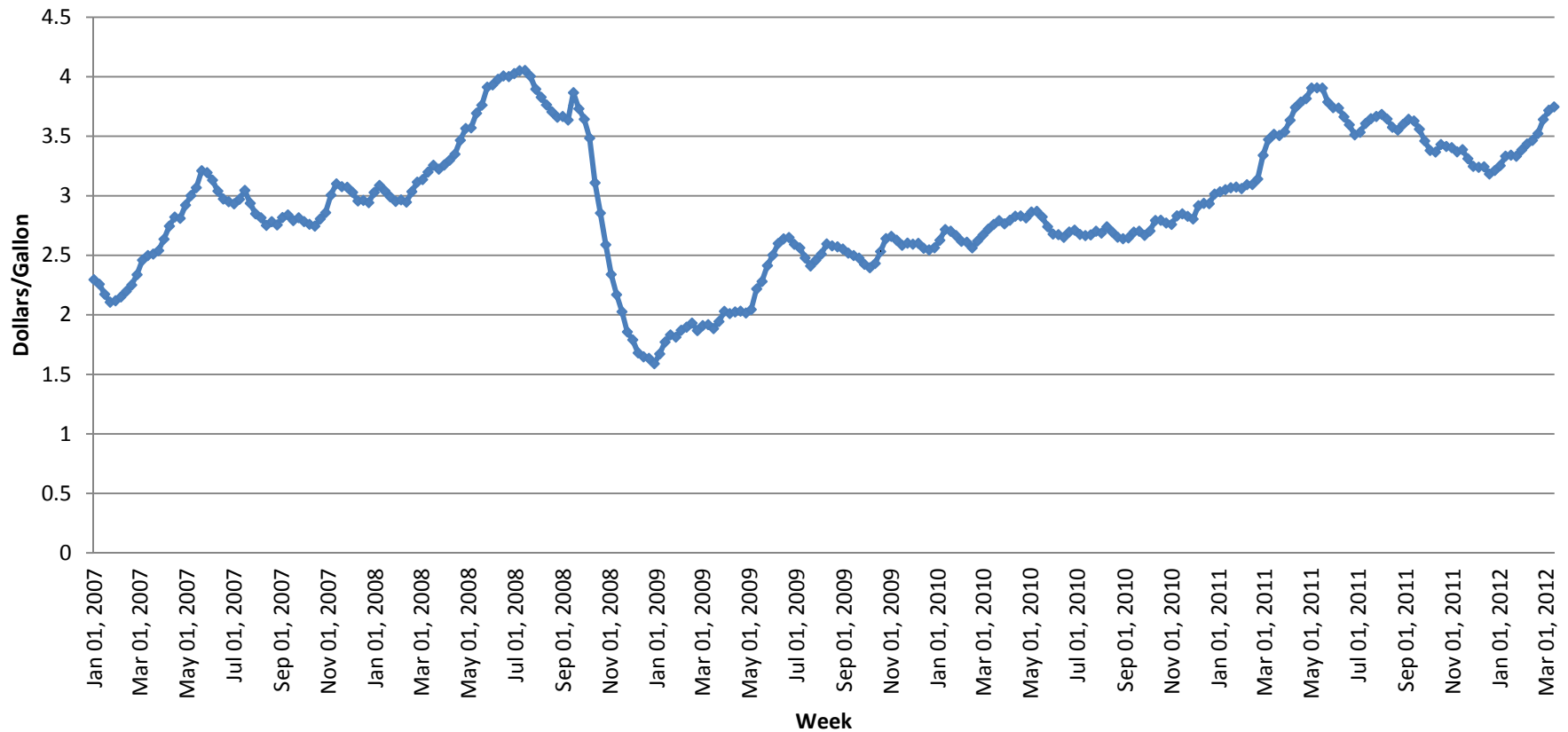
University of California System, 2011

Percent of U.C. Undergraduates by Race/Ethnicity, 2011



Gasoline Prices

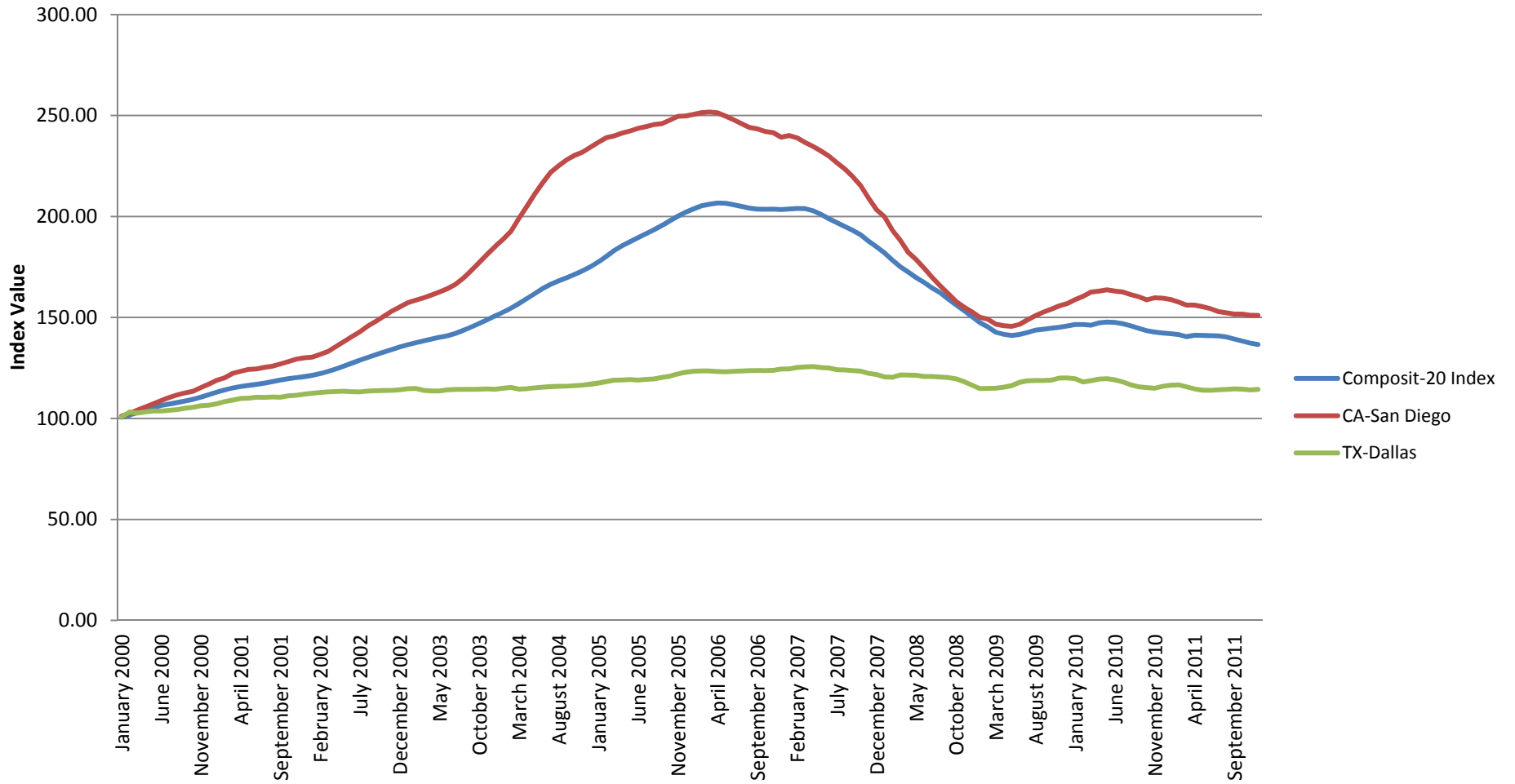
**Weekly U.S. Regular Conventional Retail Gasoline Prices (Dollars per Gallon),
January 2007 - Present**



Source: <http://www.eia.gov/petroleum/gasdiesel/>

Home Prices

S&P Case-Shiller Home Price Index,
Jan. 2000 - Dec. 2011



Month-Year Source: S&P/Case-Shiller Home Price Indices

Stock Prices

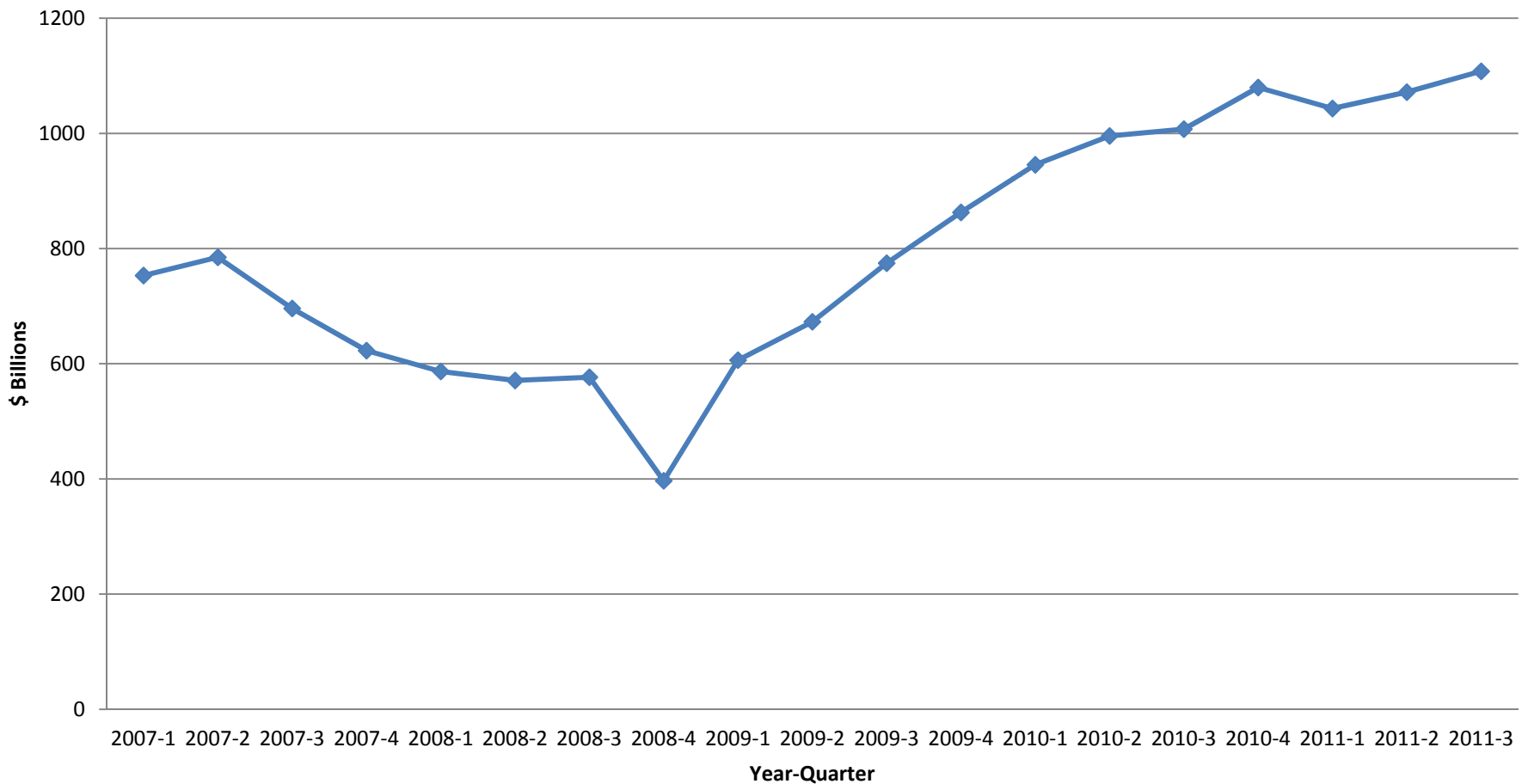
- Stock Prices

<http://www.google.com/finance?cid=626307>

<http://www.google.com/finance?cid=626307>

Corporate Profits, 2007 - 2011

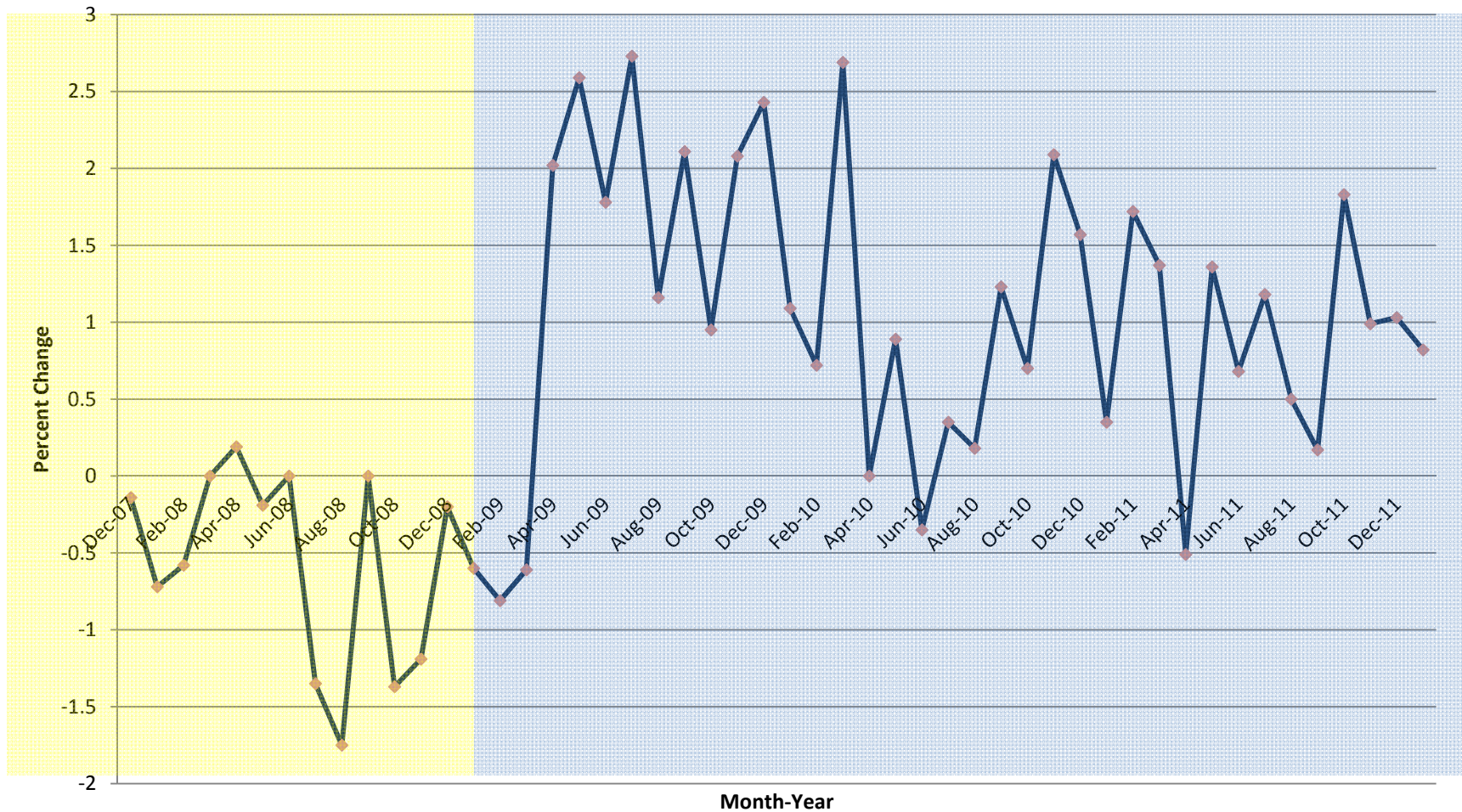
Corporate Profits after tax with IVA and CCAdj



Source: BEA, Table 1.14

Leading Economic Indicators

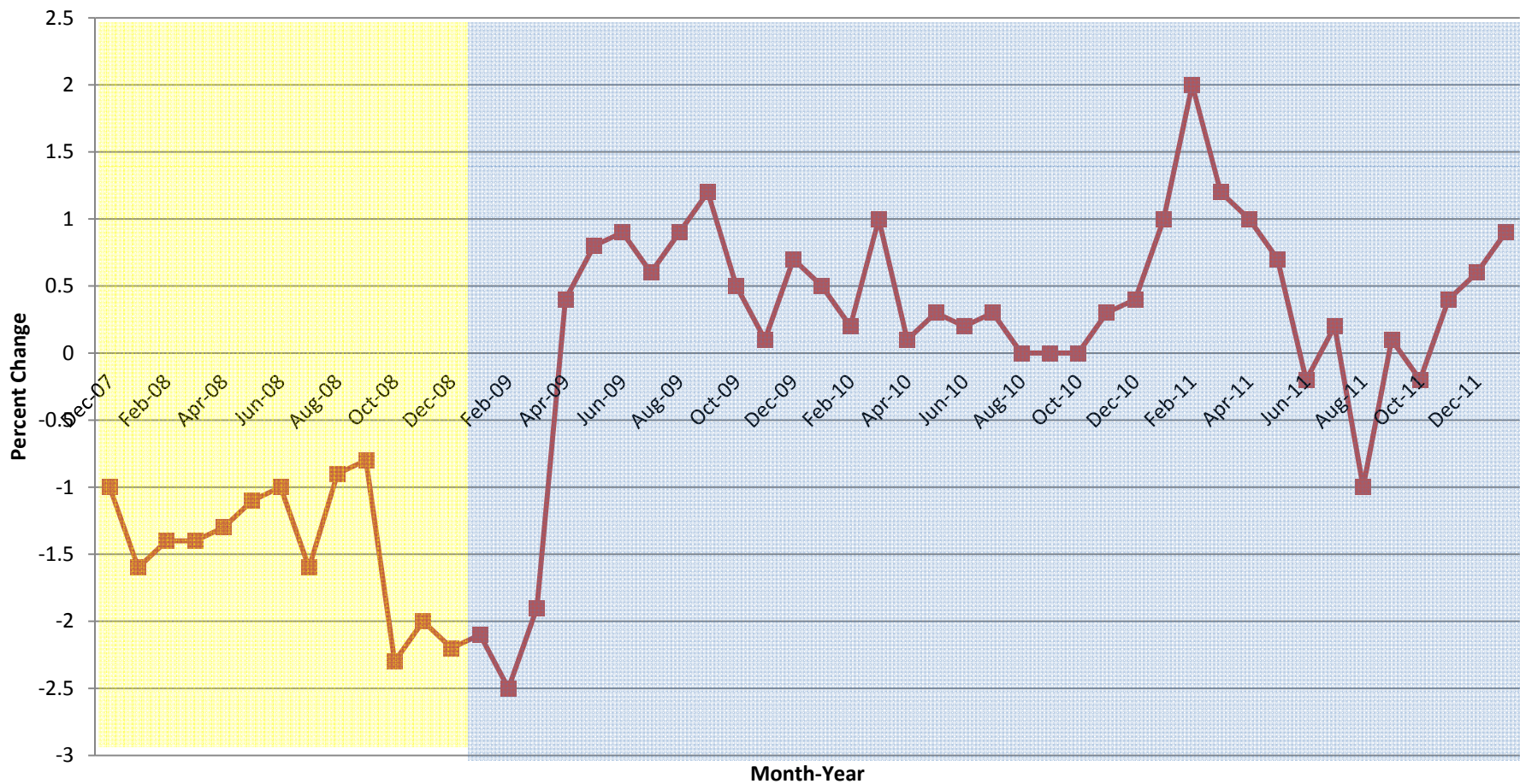
National Index of Leading Ec. Ind.'s (%Change), Dec. 2007 - Jan. 2012



Source: USD Leading Indicators--Conference Board

San Diego Leading Economic Indicators

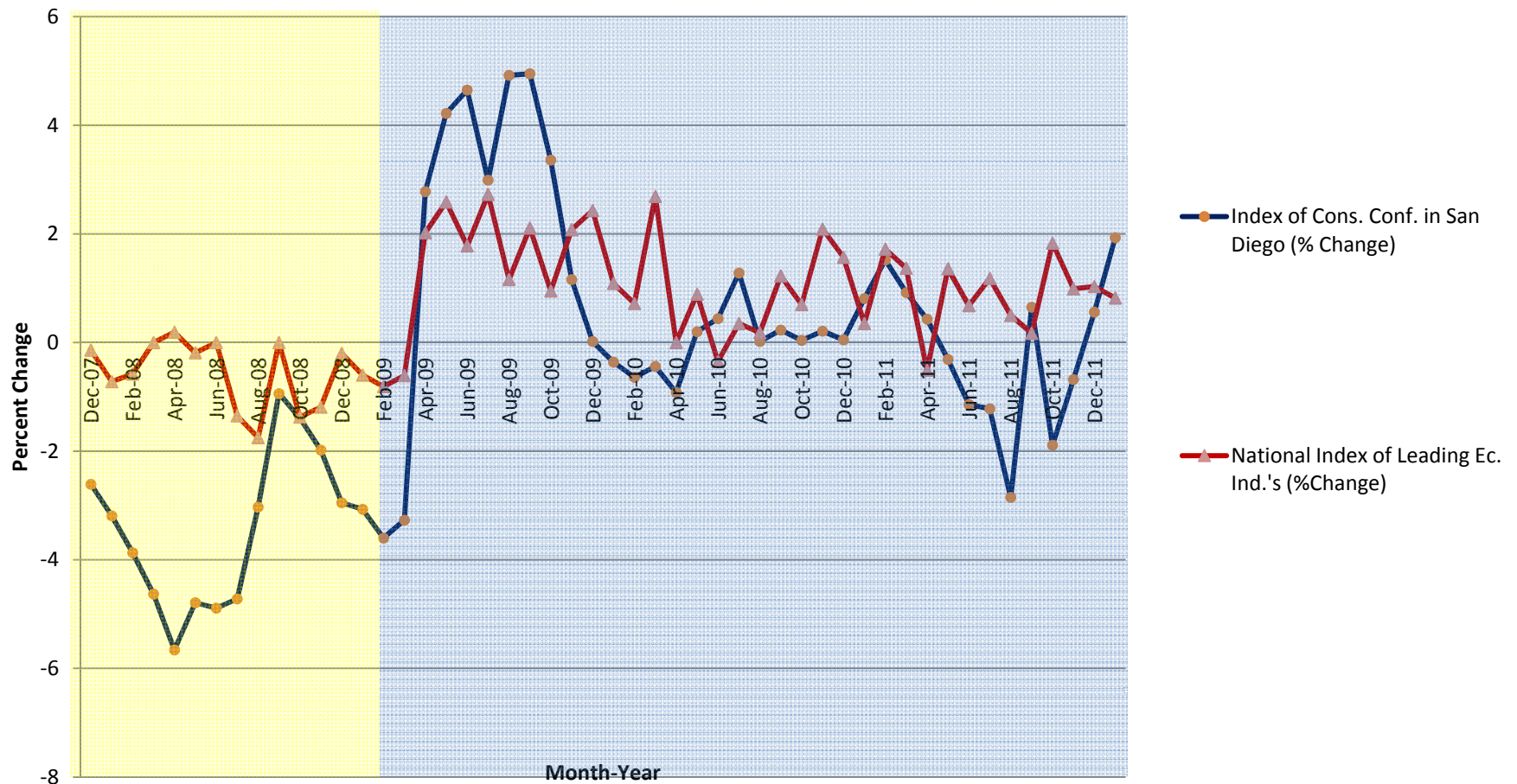
USD Leading Economic Indicators, San Diego,
Dec. 2007 - Jan. 2012



Source: USD Leading Economic Indicators, Alan Gin, <http://home.sandiego.edu/~agin/usdlej/>

San Diego vs. National Index

San Diego Index of Consumer Confidence vs. National Index of Leading Economic Indicators, Dec. 2007 – Jan. 2012



Source: USD Leading Economic Indicators, Alan Gin, <http://home.sandiego.edu/~agin/usdlel/>

Real U.S. Exports and Imports

Real U.S. Exports and Imports,
2000 - 2011

