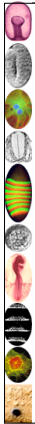


Lecture 6 - Bio - 376 Gastrulation 1

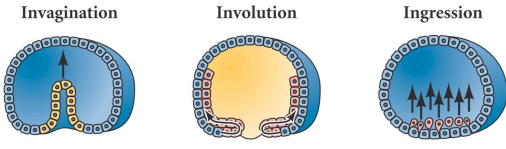


It is not birth, marriage, or death, but gastrulation which is truly the most important time in your life.

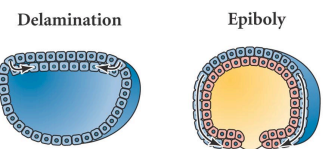
Lewis Wolpert

Figure 8.5 Types of Cell Movements During Gastrulation

Invagination Involution Ingression



Delamination Epiboly

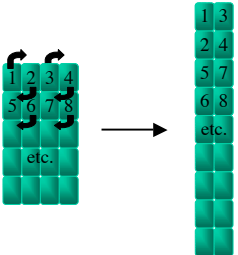


Important factors

- Individual cell shape change
- Cell Adhesion
- Cell rearrangement

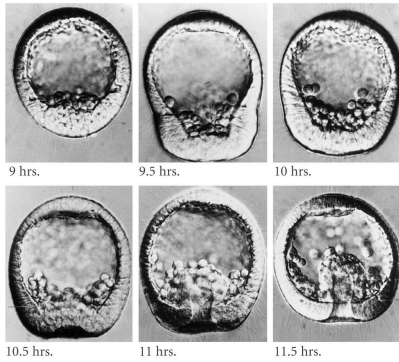
DEVELOPMENTAL BIOLOGY, Seventh Edition, Figure 8.5 © 2004 Sinauer Associates, Inc.

Convergent Extension



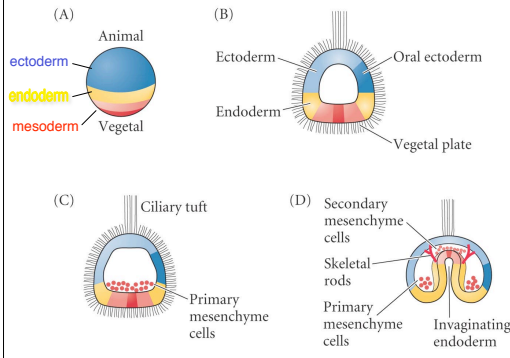
Lecture 6 - Bio - 376 Gastrulation 1

Figure 8.16(1) Entire Sequence of Gastrulation in Lytechinus variegatus



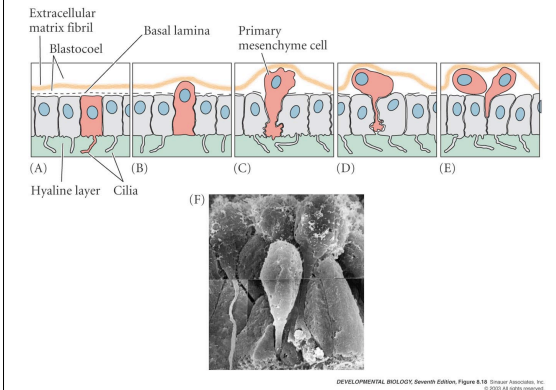
DEVELOPMENTAL BIOLOGY, Seventh Edition, Figure 8.16 (Part 1) © Garland Science, Inc. © 2003 All rights reserved.

Figure 8.15(1) Normal Sea Urchin Development, Following the Fate of the Cellular Layers of the Blastula



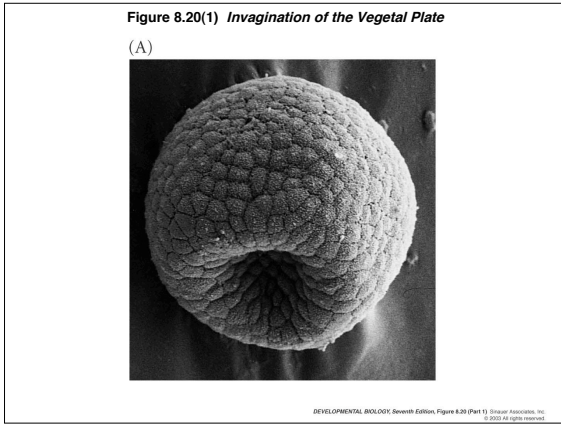
DEVELOPMENTAL BIOLOGY, Seventh Edition, Figure 8.15 (Part 1) © Garland Science, Inc. © 2003 All rights reserved.

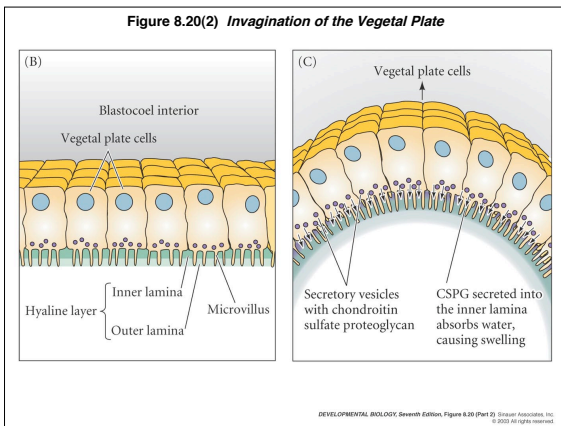
Figure 8.18 Ingression of Primary Mesenchyme Cells

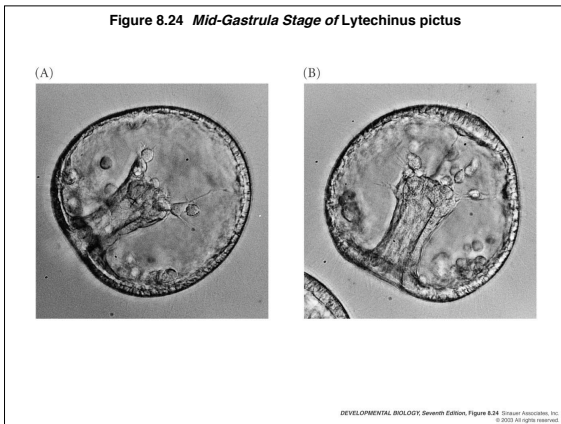


DEVELOPMENTAL BIOLOGY, Seventh Edition, Figure 8.18 © Garland Science, Inc. © 2003 All rights reserved.

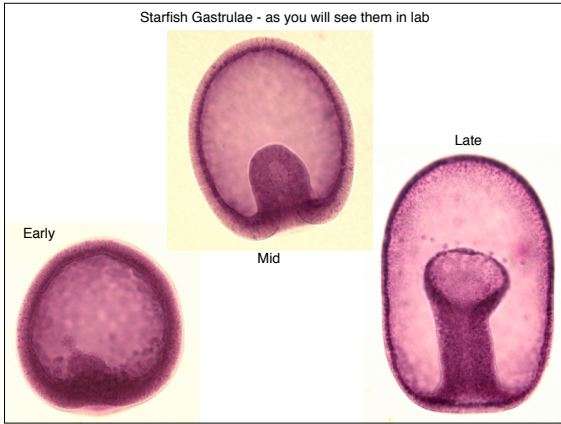
Lecture 6 - Bio - 376 Gastrulation 1

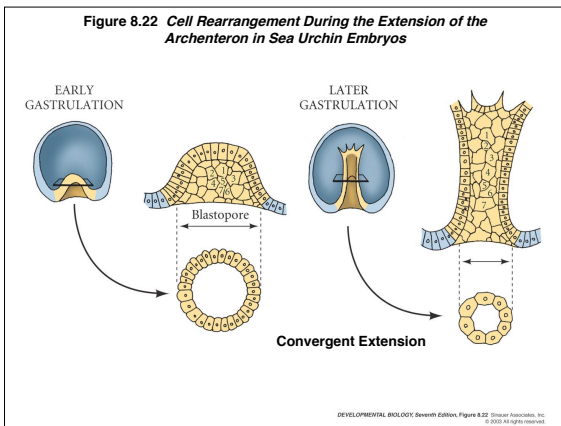


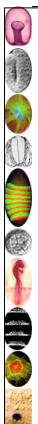




Lecture 6 - Bio - 376 Gastrulation 1



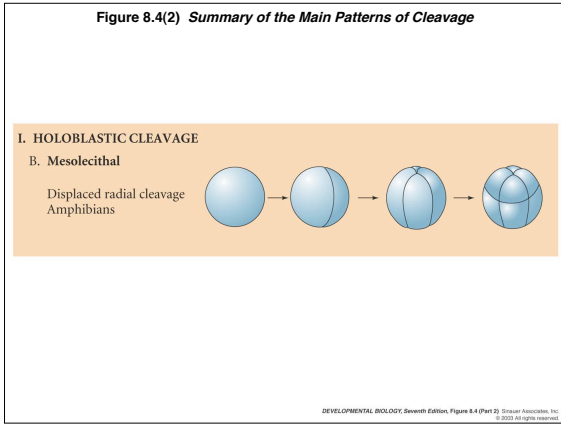


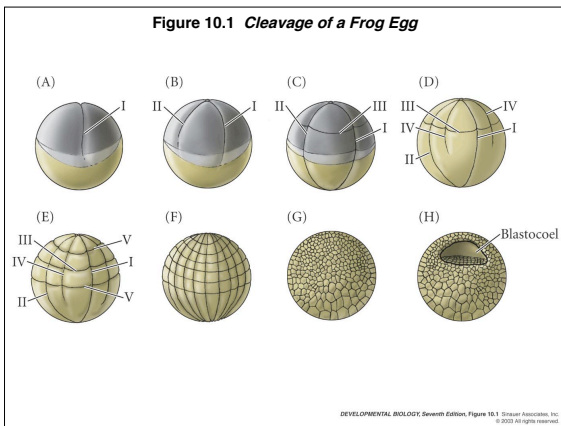


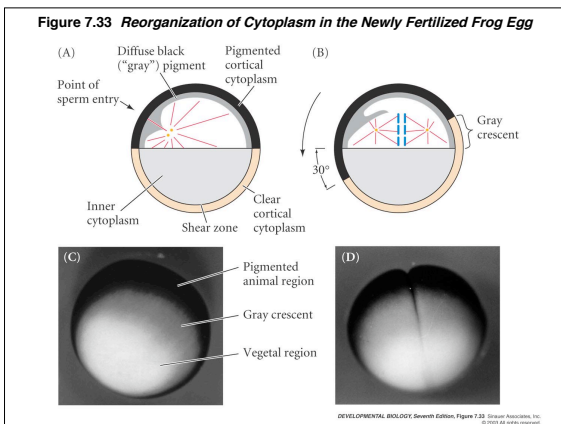
Theories come and theories go.
The frog remains.

Jean Rostand

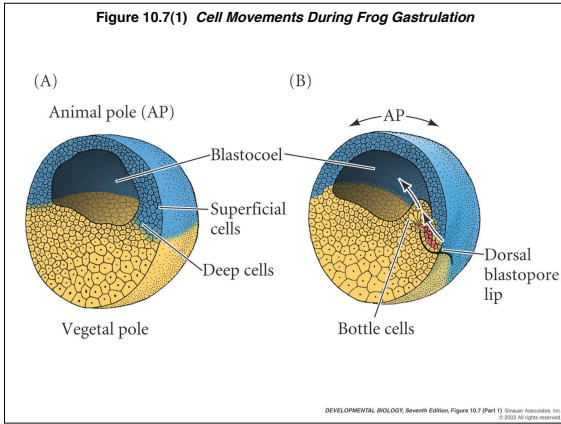
Lecture 6 - Bio - 376 Gastrulation 1

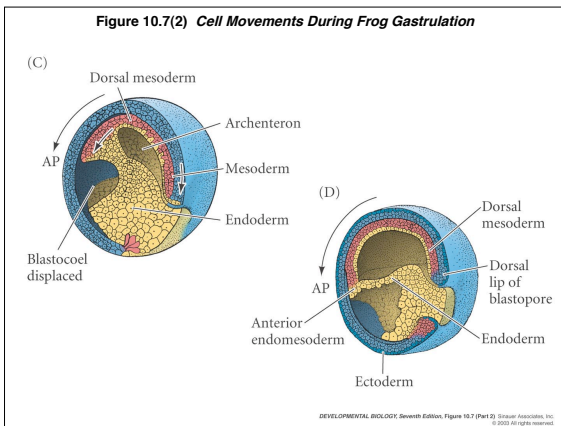


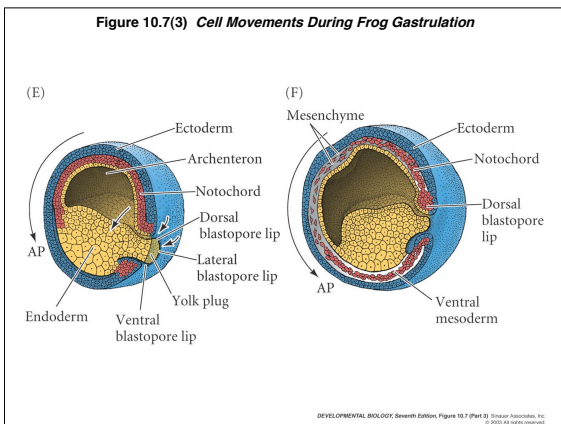




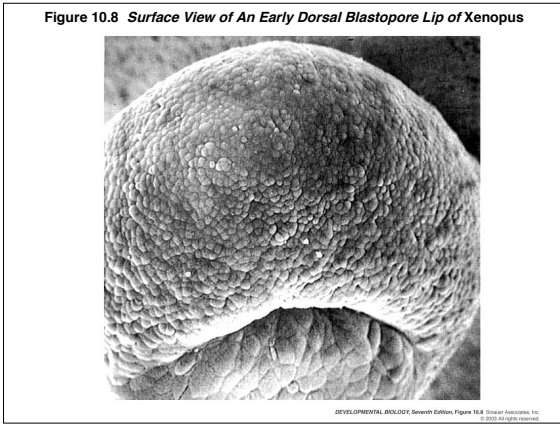
Lecture 6 - Bio - 376 Gastrulation 1

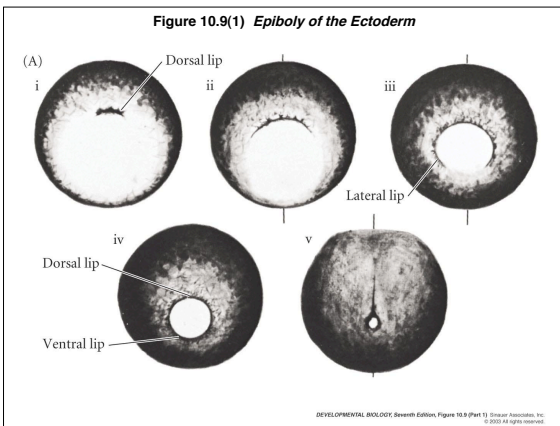


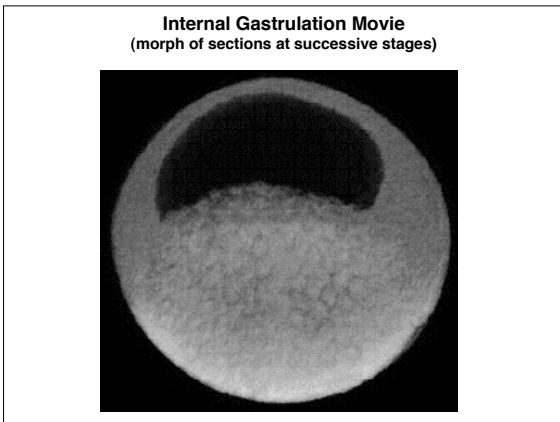




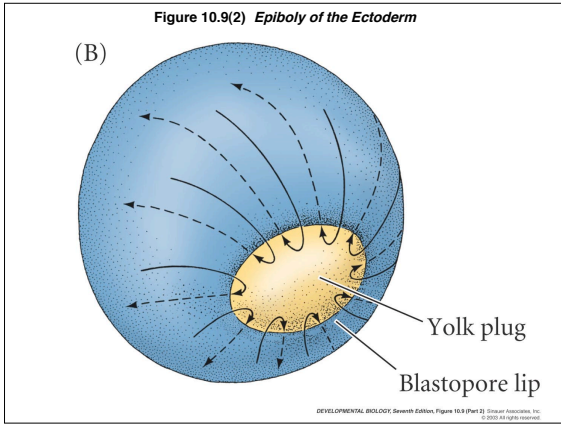
Lecture 6 - Bio - 376 Gastrulation 1

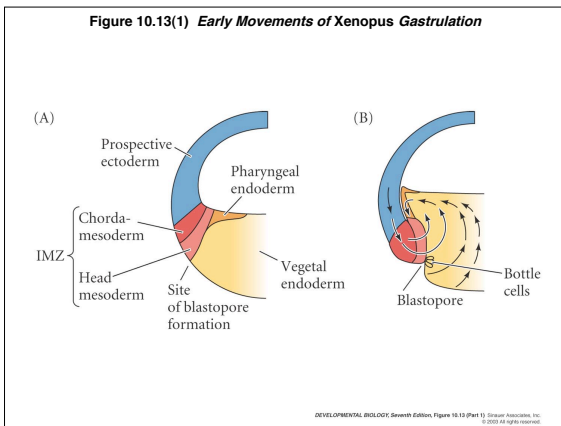


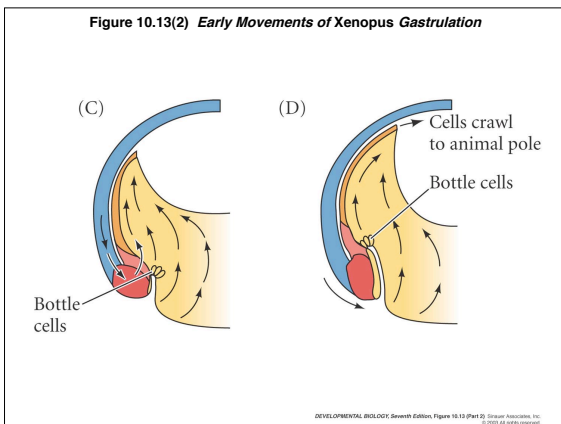




Lecture 6 - Bio - 376 Gastrulation 1







Lecture 6 - Bio - 376 Gastrulation 1

