

Theories come and theories go.
The frog remains.

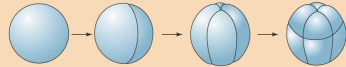
Jean Rostand

Figure 8.4(2) Summary of the Main Patterns of Cleavage

I. HOLOBLASTIC CLEAVAGE

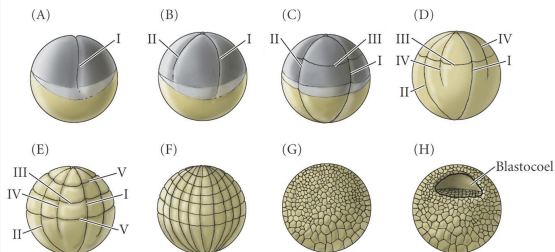
B. Mesolecithal

Displaced radial cleavage
Amphibians

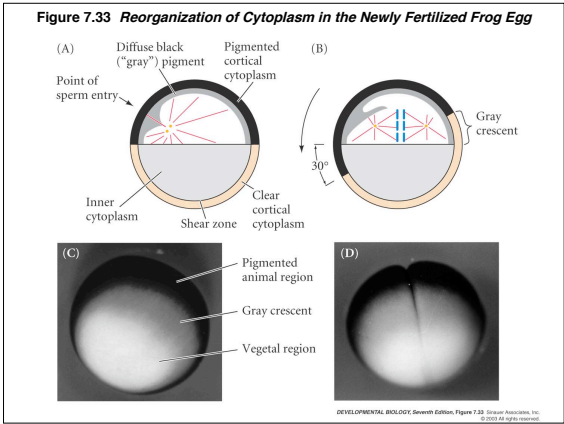


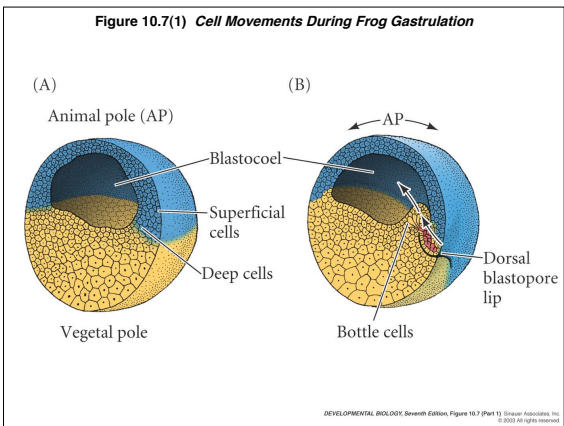
DEVELOPMENTAL BIOLOGY, Seventh Edition, Figure 8.4 (Part 2) © Garland Science, Inc. © 2005. All rights reserved.

Figure 10.1 Cleavage of a Frog Egg



DEVELOPMENTAL BIOLOGY, Seventh Edition, Figure 10.1 © Garland Science, Inc. © 2005. All rights reserved.





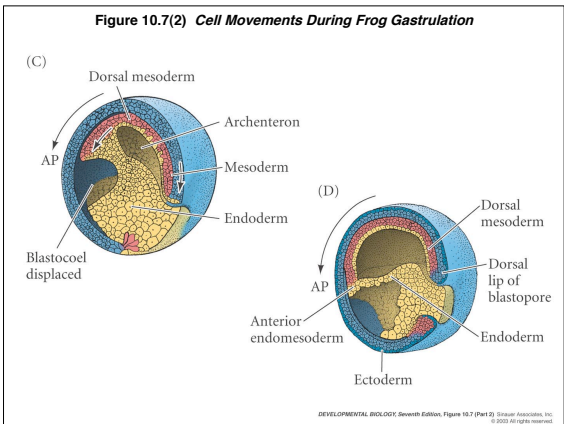
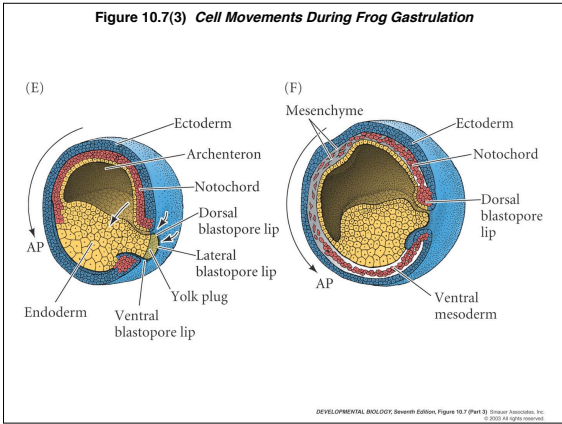
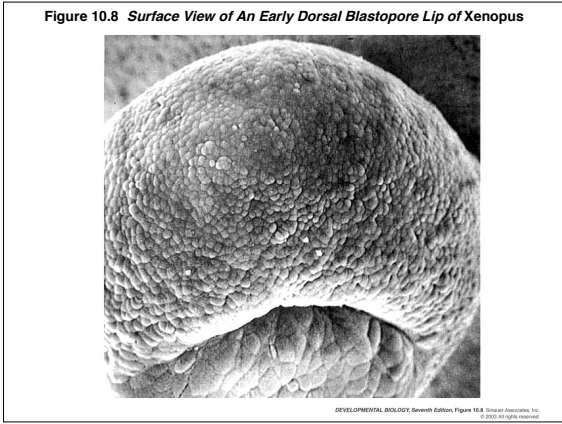


Figure 10.7(3) Cell Movements During Frog Gastrulation



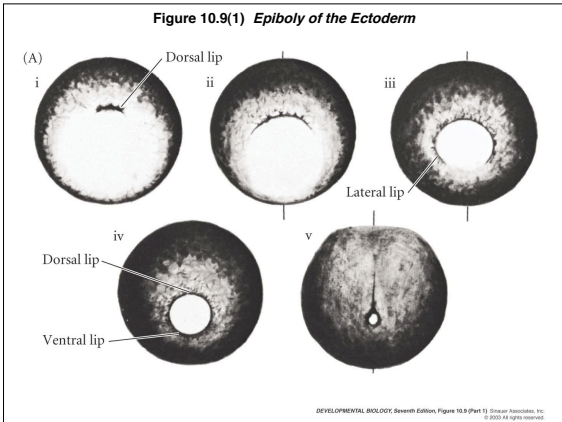
DEVELOPMENTAL BIOLOGY, Seventh Edition, Figure 10.7 (Part 3) © 2005 Sinauer Associates, Inc. All rights reserved.

Figure 10.8 Surface View of An Early Dorsal Blastopore Lip of Xenopus



DEVELOPMENTAL BIOLOGY, Seventh Edition, Figure 10.8 © 2005 Sinauer Associates, Inc. All rights reserved.

Figure 10.9(1) Epiboly of the Ectoderm



DEVELOPMENTAL BIOLOGY, Seventh Edition, Figure 10.9 (Part 1) © 2005 Sinauer Associates, Inc. All rights reserved.

Internal Gastrulation Movie
(morph of sections at successive stages)

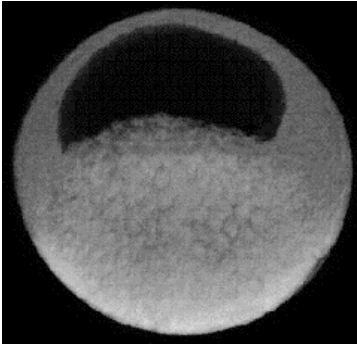


Figure 10.9(2) Epiboly of the Ectoderm

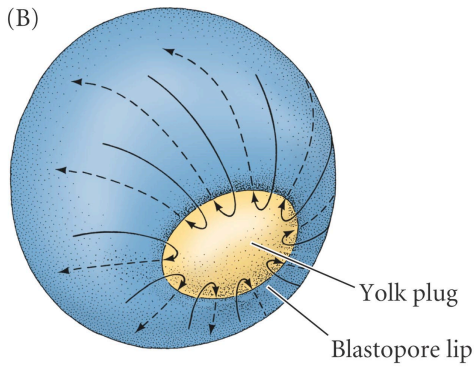


Figure 10.5 Fate Maps of the Blastula of the Frog *Xenopus laevis*

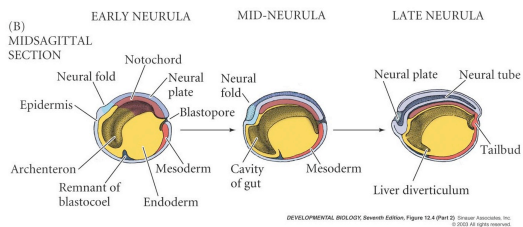
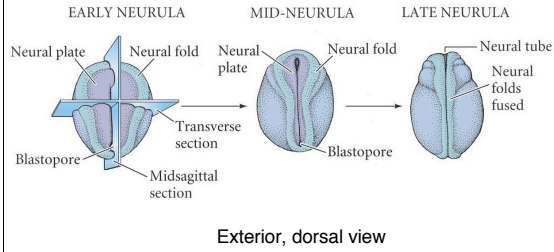


Figure 12.4(1) Three Views of Neurulation in an Amphibian Embryo



Exterior views of *Xenopus* Embryos

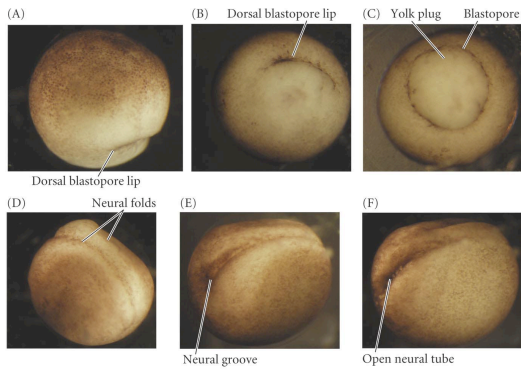
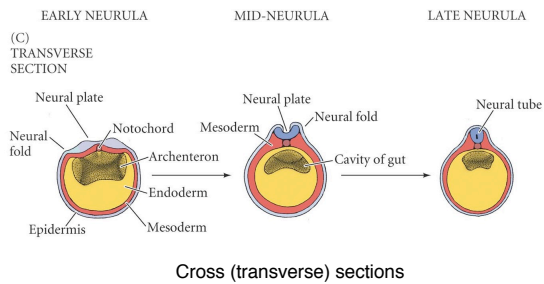


Figure 12.4(2) Three Views of Neurulation in an Amphibian Embryo



Major Derivatives of the Ectoderm

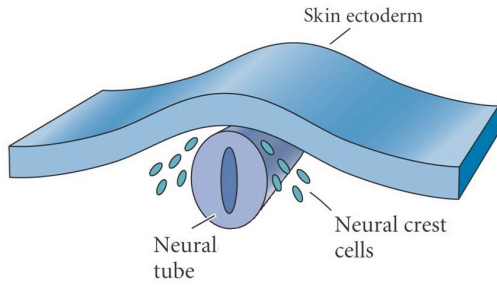
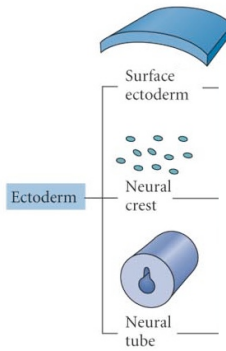
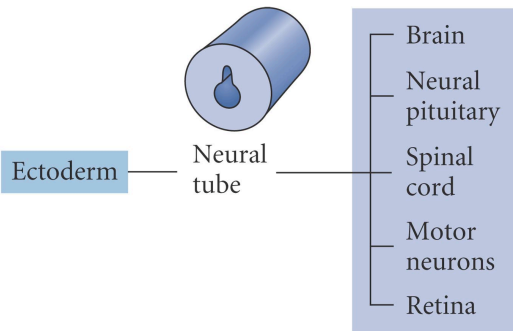


Figure 12.1(mod) Major Derivatives of the Ectoderm



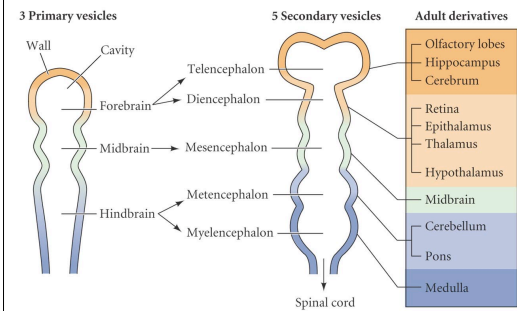
DEVELOPMENTAL BIOLOGY, Seventh Edition, Figure 12.1 © Garland Science, Inc. © 2003 All rights reserved.

Figure 12.1(4) Major Derivatives of the Ectoderm Germ Layer



DEVELOPMENTAL BIOLOGY, Seventh Edition, Figure 12.1 (Part 2) © Garland Science, Inc. © 2003 All rights reserved.

Figure 12.9 Early Human Brain Development



DEVELOPMENTAL BIOLOGY, Seventh Edition, Figure 12.9 © Garland Science, Inc. 2004. All rights reserved.

The Human Brain

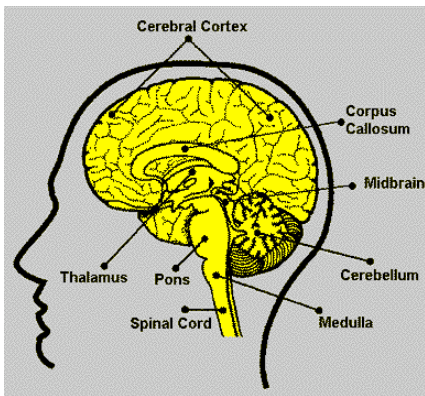
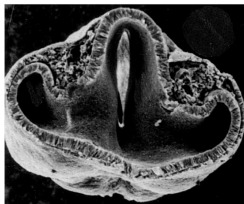
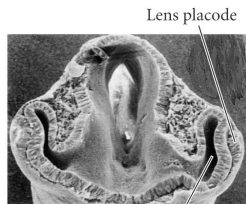


Figure 12.26(1) Development of the Vertebrate Eye

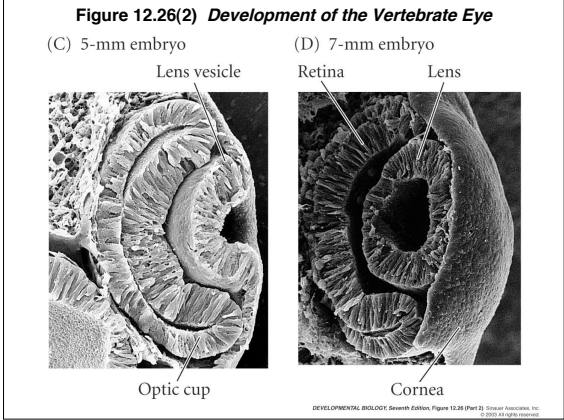
(A) 4-mm embryo

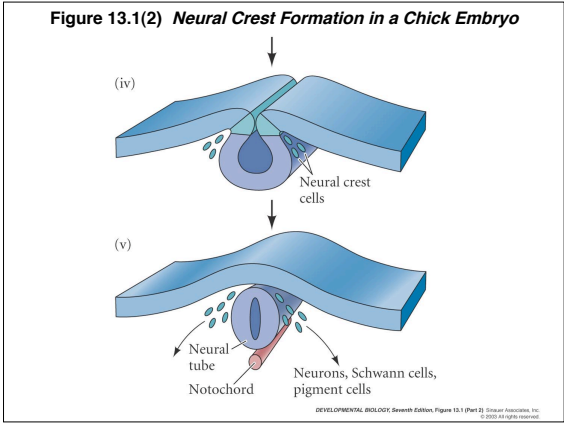


(B) 4.5-mm embryo



DEVELOPMENTAL BIOLOGY, Seventh Edition, Figure 12.26 (Part 1) © Garland Science, Inc. 2004. All rights reserved.





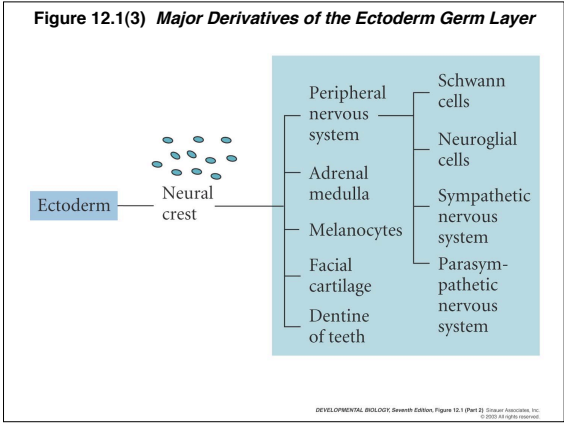


Figure 12.1(2) Major Derivatives of the Ectoderm Germ Layer

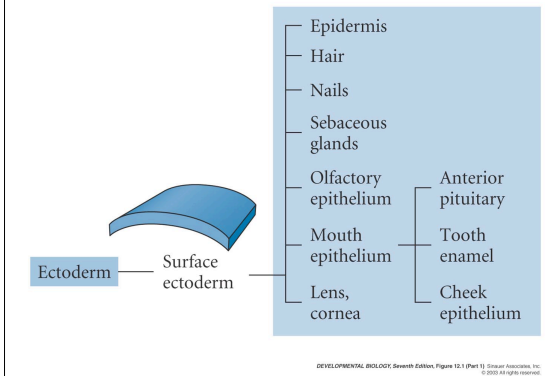


Fig. 15.1(1) Comparison of Mesodermal Development in Frog & Chick Embryos

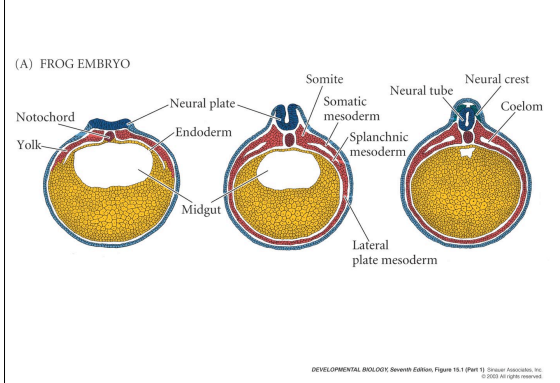


Fig. 15.1(2) Comparison of Mesodermal Development in Frog & Chick Embryos

