


---

---

---

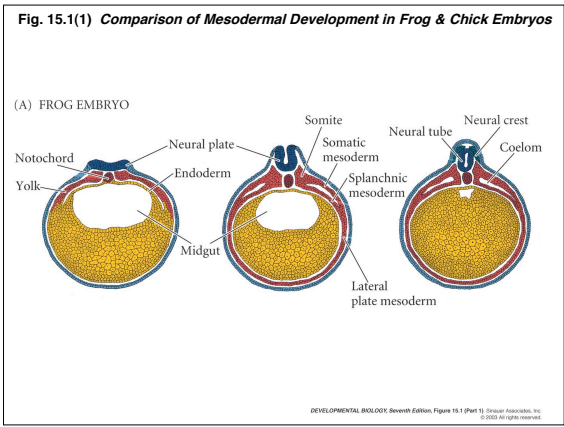
---

---

---

---

---




---

---

---

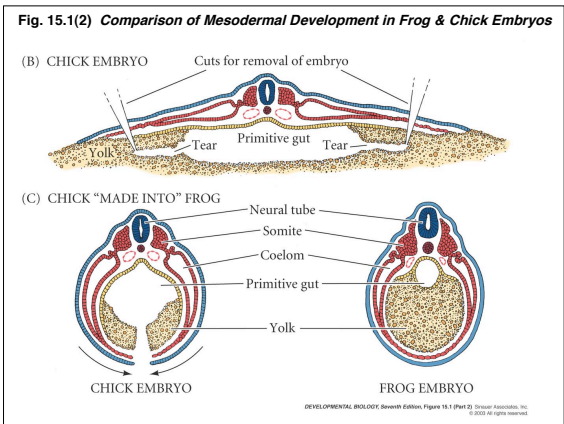
---

---

---

---

---




---

---

---

---

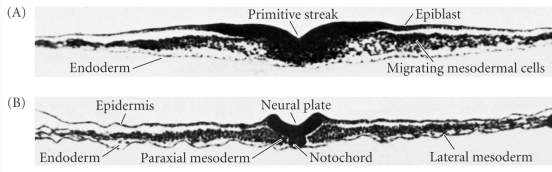
---

---

---

---

**Fig. 14.2(1) Gastrulation & Neurulation in the Chick Embryo: Mesoderm**



DEVELOPMENTAL BIOLOGY, Seventh Edition, Figure 14.2 (Part 1) Sinauer Associates, Inc. © 2005 All rights reserved.

---

---

---

---

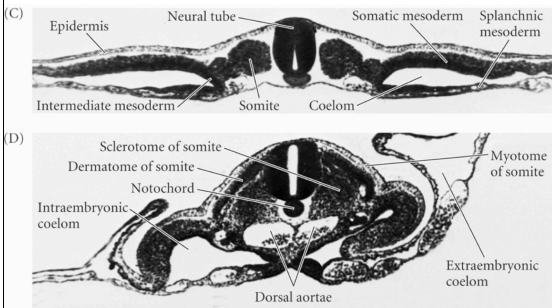
---

---

---

---

**Fig. 14.2(2) Gastrulation & Neurulation in the Chick Embryo: Mesoderm**



DEVELOPMENTAL BIOLOGY, Seventh Edition, Figure 14.2 (Part 2) Sinauer Associates, Inc. © 2005 All rights reserved.

---

---

---

---

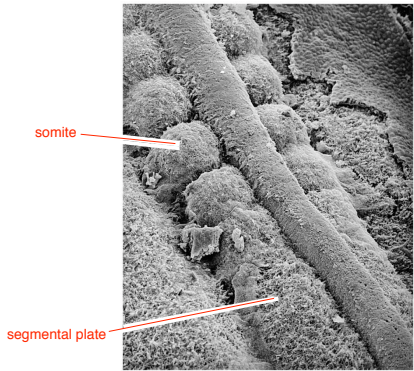
---

---

---

---

**Figure 14.4 Neural Tube and Somites**



DEVELOPMENTAL BIOLOGY, Seventh Edition, Figure 14.4 Sinauer Associates, Inc. © 2005 All rights reserved.

---

---

---

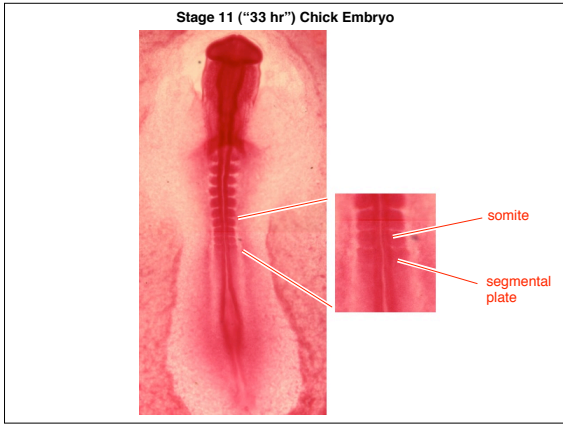
---

---

---

---

---




---

---

---

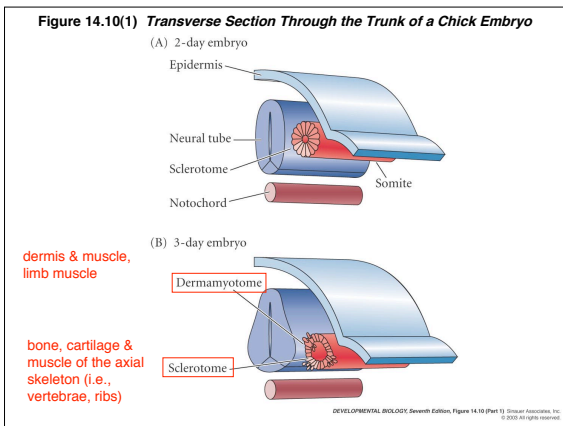
---

---

---

---

---




---

---

---

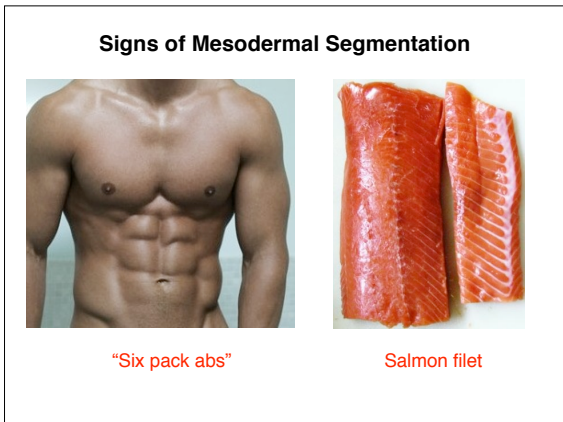
---

---

---

---

---




---

---

---

---

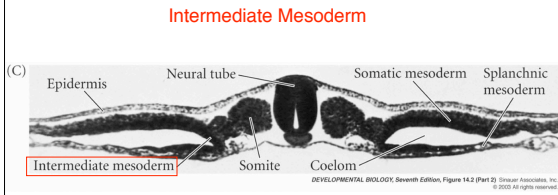
---

---

---

---

**Fig. 14.2C Gastrulation & Neurulation in the Chick Embryo: Mesoderm**



gives rise to kidney, somatic gonad, urogenital ducts

---

---

---

---

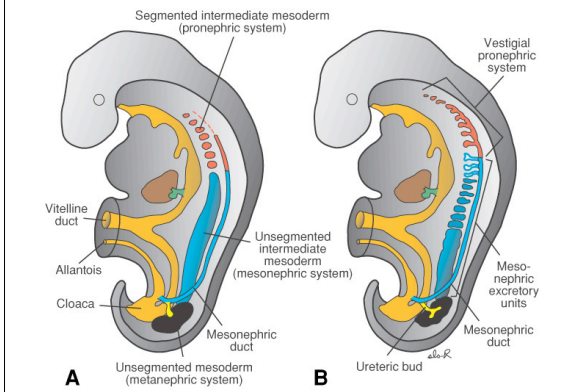
---

---

---

---

**Intermediate Mesoderm in the Human Embryo - Kidney and Urogenital ducts**




---

---

---

---

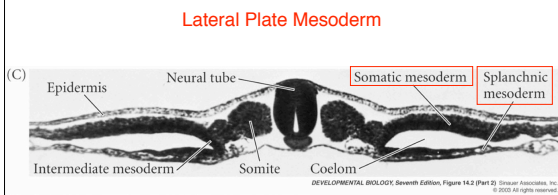
---

---

---

---

**Fig. 14.2C Gastrulation & Neurulation in the Chick Embryo: Mesoderm**



gives rise to heart, major blood vessels, limb mesoderm (except limb muscle), visceral muscle, coelomic linings

---

---

---

---

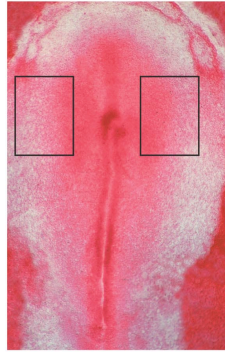
---

---

---

---

**Figure 15.2(1) Heart-forming Cells of the Chick Embryo**



DEVELOPMENTAL BIOLOGY, Seventh Edition, Figure 15.2 (Part 1) © Garland Science, Inc. 2003. All rights reserved.

---

---

---

---

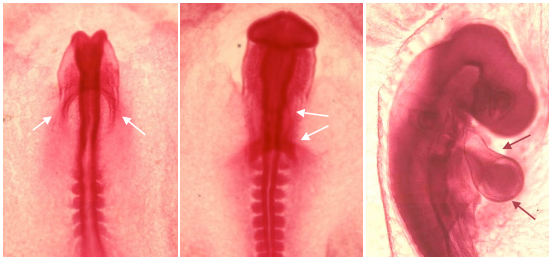
---

---

---

---

**24 hr, 33 hr, 48 hr Chick Embryo Heart Formation**




---

---

---

---

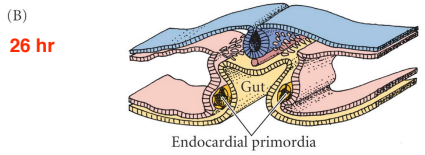
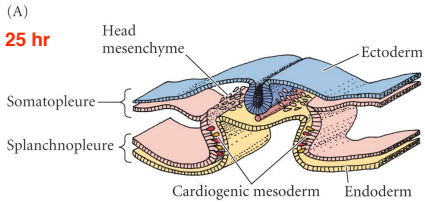
---

---

---

---

**Fig. 15.3(1) Formation of Chick Heart From Splanchnic Lateral Plate Mesoderm**



DEVELOPMENTAL BIOLOGY, Seventh Edition, Figure 15.3 (Part 1) © Garland Science, Inc. 2003. All rights reserved.

---

---

---

---

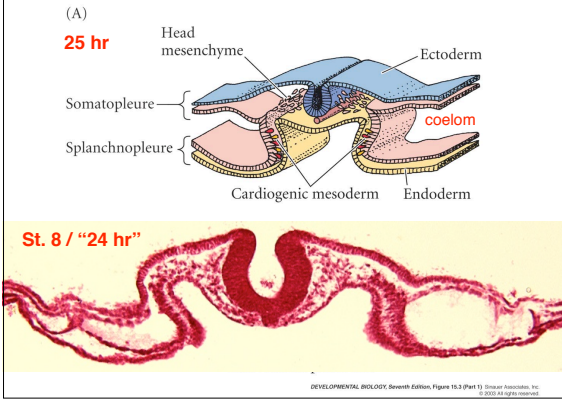
---

---

---

---

**Fig. 15.3(1) Formation of Chick Heart From Splanchnic Lateral Plate Mesoderm**




---

---

---

---

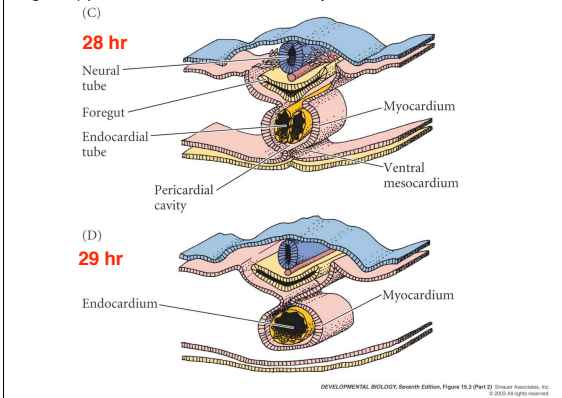
---

---

---

---

**Fig. 15.3(2) Formation of Chick Heart From Splanchnic Lateral Plate Mesoderm**




---

---

---

---

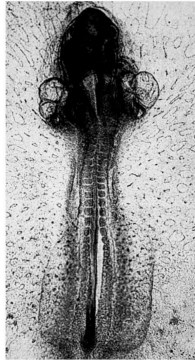
---

---

---

---

**Fig. 15.4A - Cardia bifida caused by embryonic surgery**




---

---

---

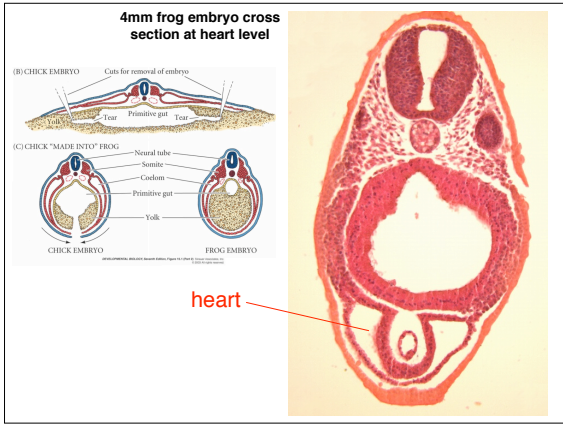
---

---

---

---

---




---

---

---

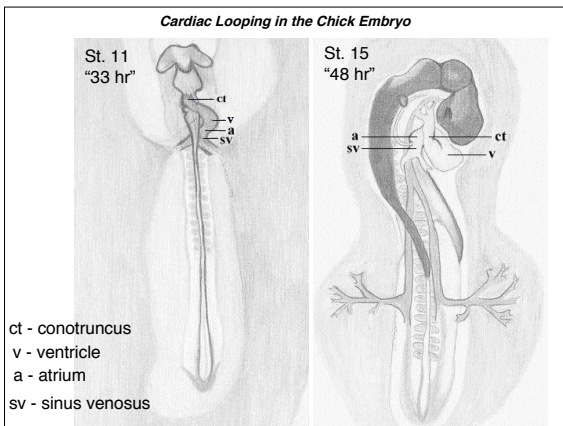
---

---

---

---

---




---

---

---

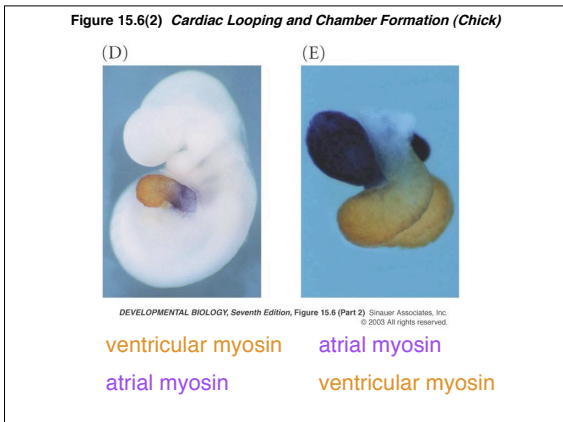
---

---

---

---

---




---

---

---

---

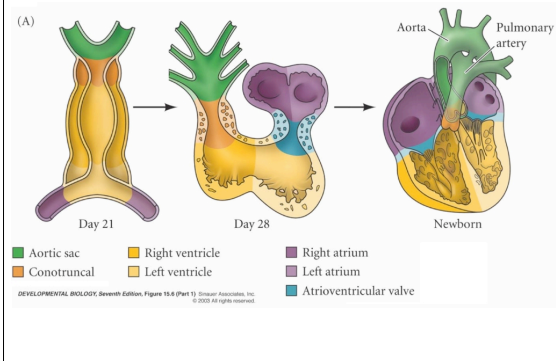
---

---

---

---

**Figure 15.6(1) Cardiac Looping and Chamber Formation (Human)**




---

---

---

---

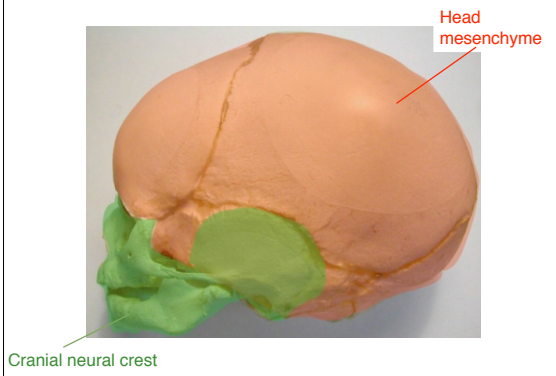
---

---

---

---

**Head mesenchyme & cranial neural crest derivatives in human fetal skull**




---

---

---

---

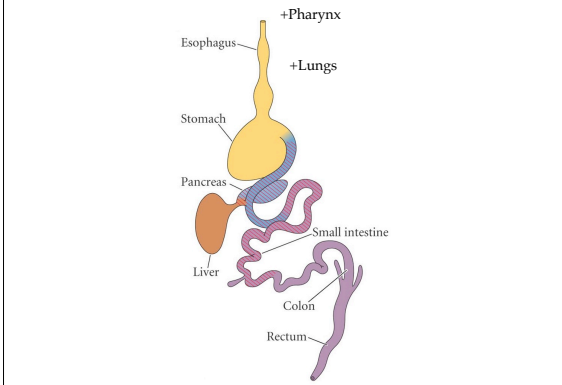
---

---

---

---

**Endoderm - formation of the gut tube**




---

---

---

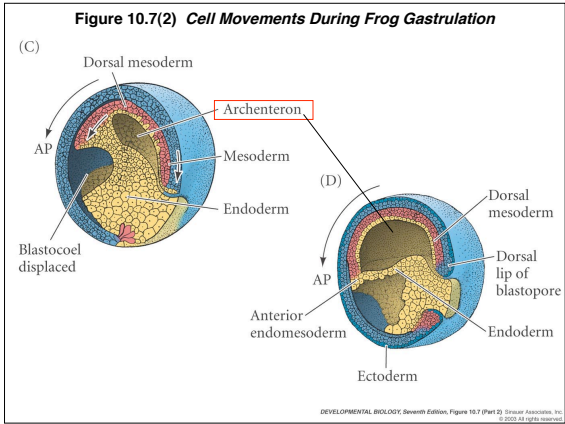
---

---

---

---

---




---

---

---

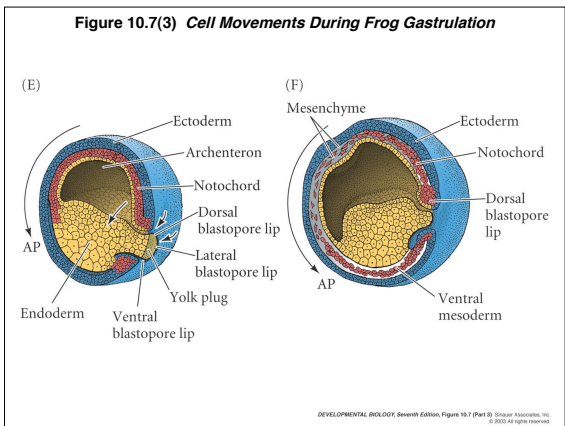
---

---

---

---

---




---

---

---

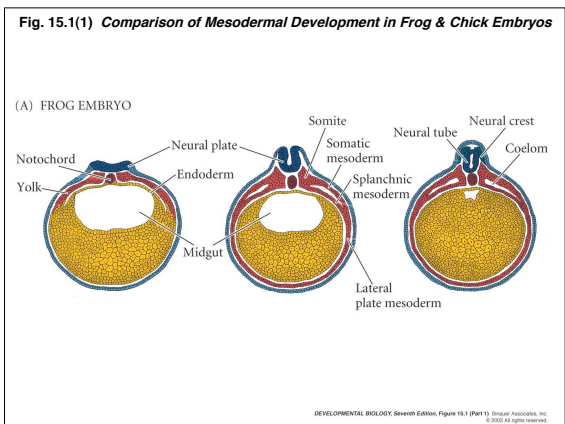
---

---

---

---

---




---

---

---

---

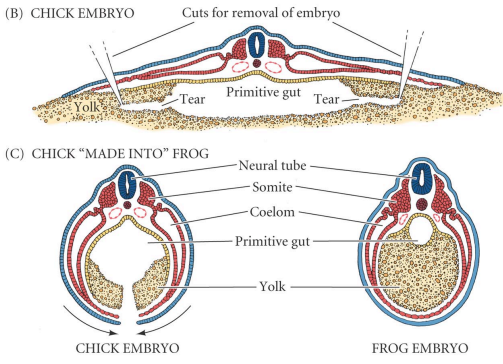
---

---

---

---

**Fig 15.1(2) Comparison of Mesodermal Development in Frog & Chick Embryos**



DEVELOPMENTAL BIOLOGY, Seventh Edition, Figure 15.1 (Part 2)  
© 2005 Sinauer Associates, Inc. All rights reserved.

---

---

---

---

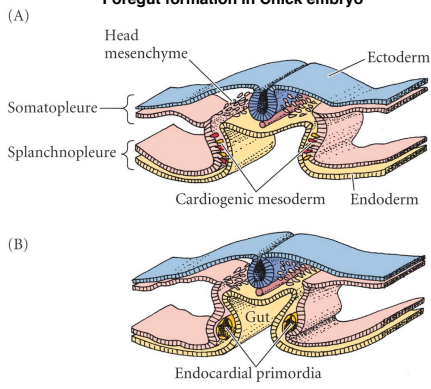
---

---

---

---

**Foregut formation in Chick embryo**



DEVELOPMENTAL BIOLOGY, Seventh Edition, Figure 15.3 (Part 1)  
© 2005 Sinauer Associates, Inc. All rights reserved.

---

---

---

---

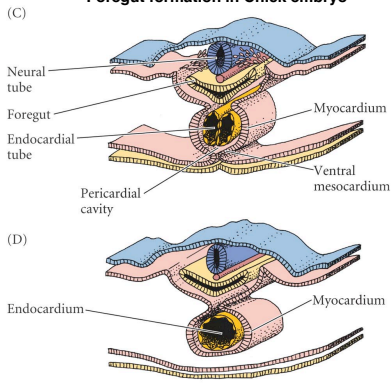
---

---

---

---

**Foregut formation in Chick embryo**



DEVELOPMENTAL BIOLOGY, Seventh Edition, Figure 15.3 (Part 2)  
© 2005 Sinauer Associates, Inc. All rights reserved.

---

---

---

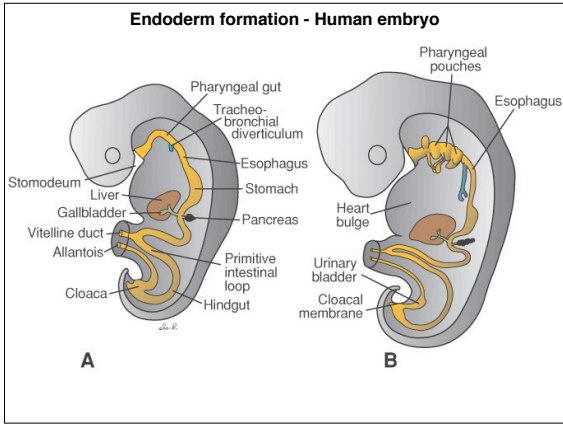
---

---

---

---

---




---

---

---

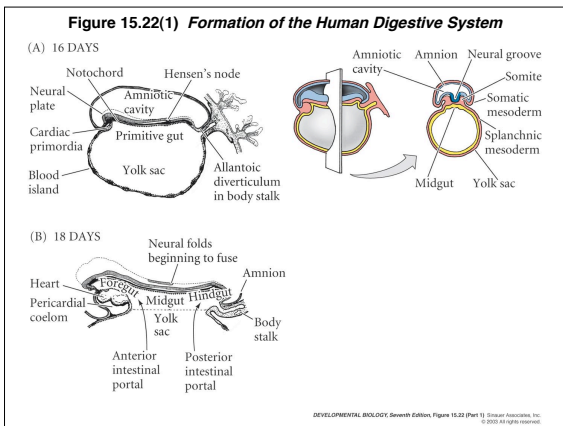
---

---

---

---

---




---

---

---

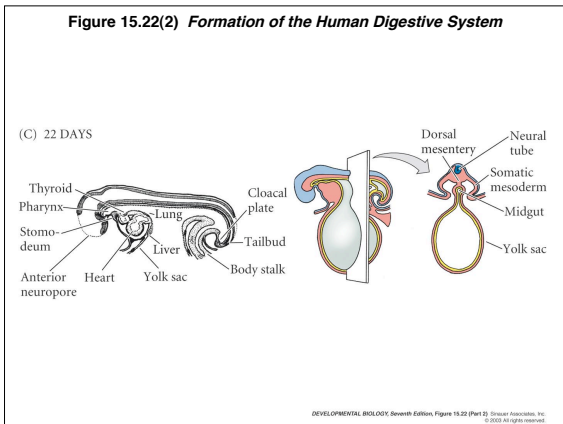
---

---

---

---

---




---

---

---

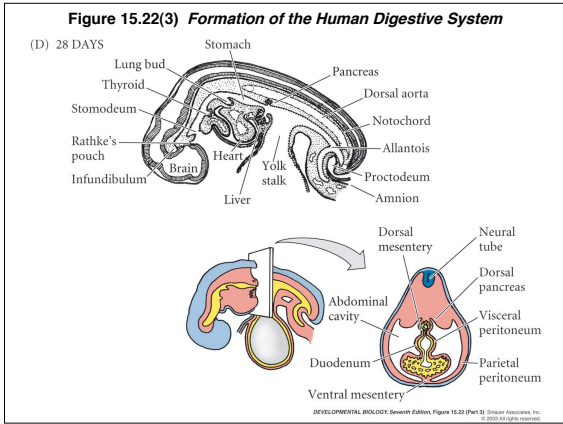
---

---

---

---

---




---

---

---

---

---

---

---

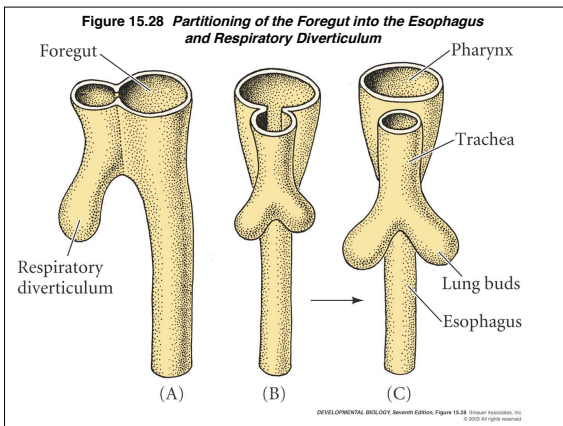
---

---

---

---

---




---

---

---

---

---

---

---

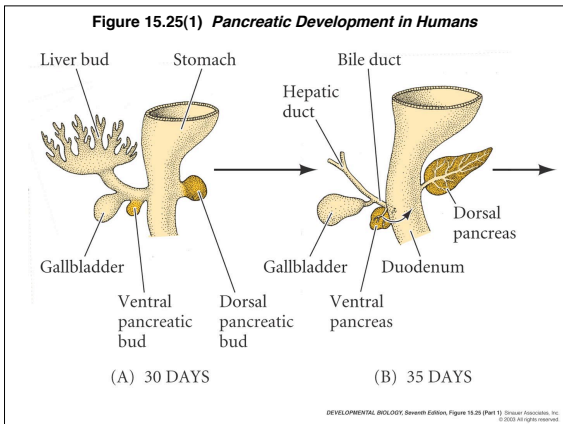
---

---

---

---

---




---

---

---

---

---

---

---

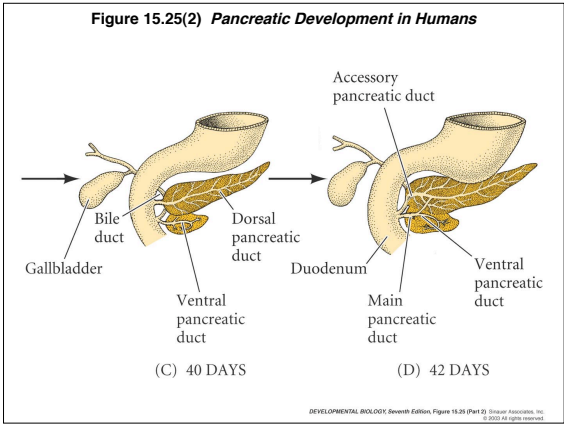
---

---

---

---

---




---

---

---

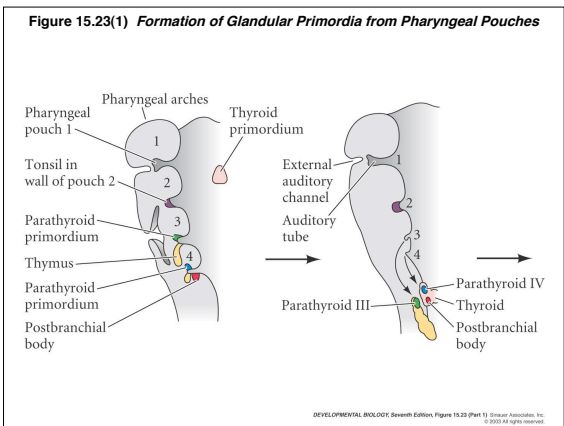
---

---

---

---

---




---

---

---

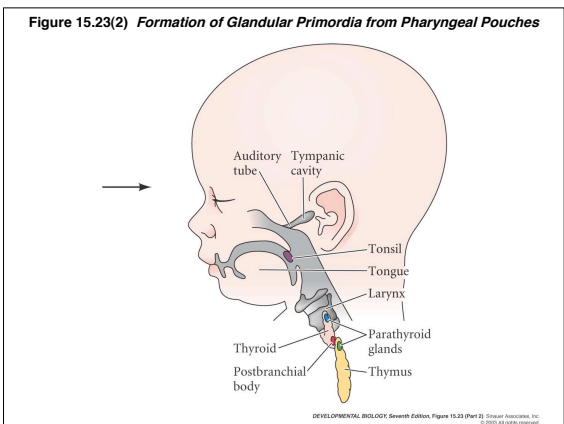
---

---

---

---

---




---

---

---

---

---

---

---

---

**Extraembryonic Membranes**  
- an adaptation of the amniote egg

Somatopleure-derived

Chorion (outermost) - gas exchange / placenta

Amnion - protective, aqueous environment

Splanchnopleure-derived

Allantois - waste collection

Yolk sac (innermost) - surrounds yolk

---

---

---

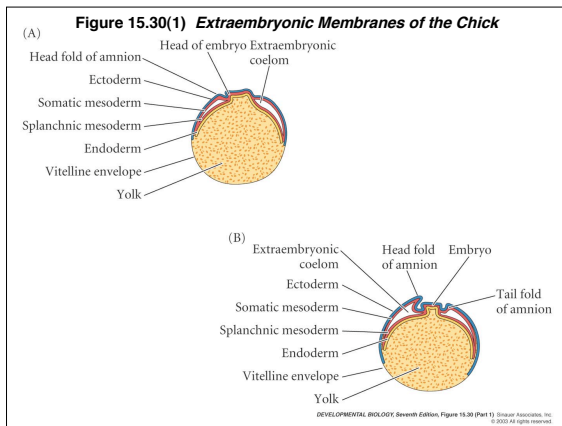
---

---

---

---

---




---

---

---

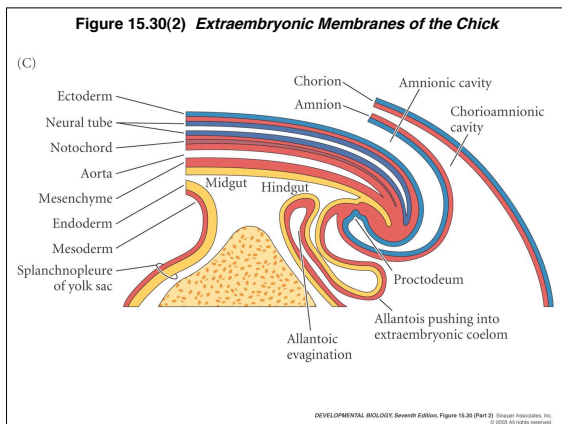
---

---

---

---

---




---

---

---

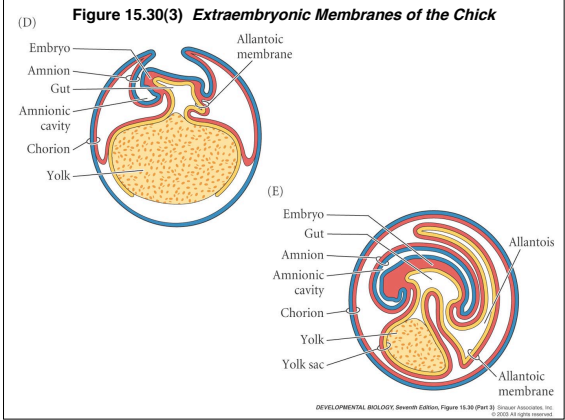
---

---

---

---

---




---



---



---



---



---



---



---