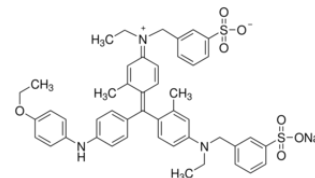


MDH Bradford Protein Assay Protocol:

Micro-Assay (96 well plate) version

Theory and Introduction: Protein Assay – There are many reasons to conduct a protein assay. During a purification of a protein, you need to know how pure your sample is by determining the amount of enzymatic activity vs. protein concentration. When comparing samples on an SDS-PAGE gel or using antibody for a Western blot, you need to add the same amount of protein from various preparations to obtain consistent results. Most protein assays take advantage of a reaction between a reagent dye and the protein of interest that will shift or increase the absorbance of a particular wavelength. There are only a few regularly used methods to determine protein concentration. The Bradford assay is described below. The Lowery/Bicinchoninic acid assay (BCA) utilizes a copper-protein chelate where the absorbance of a reduced copper solution is measured to detect protein. The UV absorbance of a protein, contributed primarily by three residues, Phe, Tyr and Trp are used in what is called the Christian Warburg method or using the extinction coefficient. However, the individual amino acid composition varies widely from protein to protein. Some proteins contain few if any Trp residues, while Tyr and Phe can change several fold from protein to protein.



Structure of CBB G-250

Bradford reagent: The Bradford protein assay is a colorimetric protein assay originally described by Marion Bradford (*Anal Biochem* **72**:248-54, 1976), which uses a disulfonated triphenylmethane compound called Coomassie Brilliant Blue G-250 (CBB G-250). Without protein in acidic solution the dye is red-brown. Under acidic conditions the protein binds to mostly basic amino acids such as arginine, lysine, and other amino acids including histidine. Under these conditions, dye-amino acid binding results in a shift in pKa of the dye causing the color to change from green/brown tint to blue. The protein-bound dye is measured at 595 nm. The more protein, the more intense the blue color. Amino acid composition as well as post-translational modification of proteins can lead to variation of dye intensity. Care must also be taken that the dye is not the limiting reagent in the assay as this will result in a non-linear standard curve. Bradford dye is easy to use, is fast and sensitive, but several compounds can interfere with the assay (conduct a search or look on the Biorad website for Bradford reagent interfering compounds).

Standard curve: A protein assay consists of two main components; the standard curve and the unknowns. How does the measured absorbance relate to the actual protein concentration? To determine the actual concentration of a protein a standard curve is required. A standard curve is a plot of absorbance vs. a varying amount of a known protein for which the concentration is known. Then you will do the same in parallel with unknown protein samples (in this case either pure protein or the bacterial cell lysates). A common method to prepare a standard curve is to prepare various known protein concentrations as standards. As long as the volume of the standard samples and the unknown samples are the same the final concentration of the unknown is directly calculated from the least squares line of the standard curve. Of course you have to correct for any dilution of your sample.

Depending on the method, proteins generally vary in the degree of reaction with the color dye in the different protein assays. Therefore, it is important to note which specific control or reference protein was used to make the standard curve. Two common proteins used for standard curves are bovine serum albumin (BSA) and an immunoglobulin (IgG). These two proteins have a different amino acid composition, which leads to a different standard curve and a slight difference in the final determination of the unknown protein concentration. Because the color development is dependent on the amino acid composition of the protein and the presence of a prosthetic group (especially carbohydrates) can also influence the protein assay, a purified sample of the protein being assayed or a closely related protein is a preferred standard if available.

Be linear: Once you have performed the assay, a standard curve is generated and the results graphed. Before using the standard curve you've created, you must be certain that the absorbance is a linear function of concentration that holds within the limits of the Beer-Lambert Law. Beer's law does not hold at high concentrations. A common reason for a lack of linearity is the depletion of one of the reagents necessary for color production. Another reason for error is that the absorbance is too high. Remember that absorbance is 1/transmittance (the spec is really reading how much light goes through the sample). Therefore, a high absorbance means very little light is making it through the sample. When the absorbance is very high (1.2-1.5 for plate reader assays and 1.7 – 2.5 for spectrophotometers) you should look closely at your data. If the standard curve is leveling off, then you should not use the points with the higher absorbance. Thus, readings



MDH Bradford Protein Assay Protocol:

Micro-Assay (96 well plate) version

should always be taken in the region where all reagents are in excess so that the curve of absorbance vs. concentration is linear.

Sample Preparation: When determining the protein concentration of an unknown sample, several dilutions should be used to ensure the protein concentration is within the range of the assay. Usually several 10-fold dilutions are used to get the unknowns within the standard curve range. While this may seem redundant, often times your sample may end up too diluted to fit within the standard curve. Without the additional dilutions, you will have to start over again. Don't forget that all dilutions must be taken into account in calculating the final concentration of the protein.

Finally, with every assay a "blank" must be included. The blank or the tube without a standard protein is usually made up in the same buffer as in the samples. This way if the buffer has an effect on the protein assay reagent, each sample (and the blank) will have been altered the same amount. The "blank" is used to set the instrument to the 100% transmittance or 0 absorbance.

Protocol – NOTE: USE A CLEAR 96 WELL PLATE.

FIRST ADD BRADFORD REAGENT **THEN** ADD PROTEIN SAMPLES (EITHER STANDARDS OR UNKNOWN) TO THE BRADFORD REAGENT IN THE WELLS. Calculate your additions in your lab book in table format.

- 1 - Prepare 0.5 ml of each known BSA protein standard. Freeze unused standards for your next assay!
 - The stock BSA concentration is 1.00 mg/ml. Use water to dilute. Adjust if the concentration is different.
 - Protein standards = 0.0, 0.05, 0.1, 0.2, 0.4, 0.6, 0.8 and 1.0 mg/ml.
- 2 - Determine how many wells you will need for your assay.
 - Run EACH standard and sample in triplicate. (If checking column fractions, n=1 will be fine.)
- 3 - Add 250 μ l of 1X Bradford reagent in each well.
- 4 - Add 10 μ l of EITHER BSA standard OR your unknown sample to the Bradford Reagent.
- 5 - Determine the absorbance at 595 nm using the plate reader
 - Use methods or protocols to find the Bradford assay file and measure your protein.
 - Record your data and include it in your notebook.
- 6 - Wash your plate and if needed a rinse with methanol followed by water to remove residual blue dye.

Calculations –

1. Prepare a graph of the standards (the standard curve) with the dependent variable (mg/ml) on the X axis and the independent variable (abs 595 nm) on the Y axis.
 - Calculate the protein concentration of your knowns using $CV=CV$. See #3 below.
 - You do NOT know the protein concentration of your experimental/unknown samples, therefore the unknown samples/fractions/experimental assays can NOT be graphed on your standard curve.
 - Do not "connect the dots" of the standard curve, instead perform a linear regression to your data.
 - Show the regression "r" value in the box of your graph. The closer to 1.0 the number the more in line your data are. 0.9 to 1.0 are reasonable values. Look at the line, if the last one or two points indicate that the absorbance does NOT increase in a linear fashion with added protein, exclude these values from your curve. Think about why this might be the case.
2. Use the linear regression to calculate the concentration in your unknown samples. If you diluted your sample, don't forget to multiply the concentration by your dilution factor.

3. When performing calculations, ignore the volume of the Bradford reagent. You need to know the concentration of protein in your original sample NOT the cuvette!