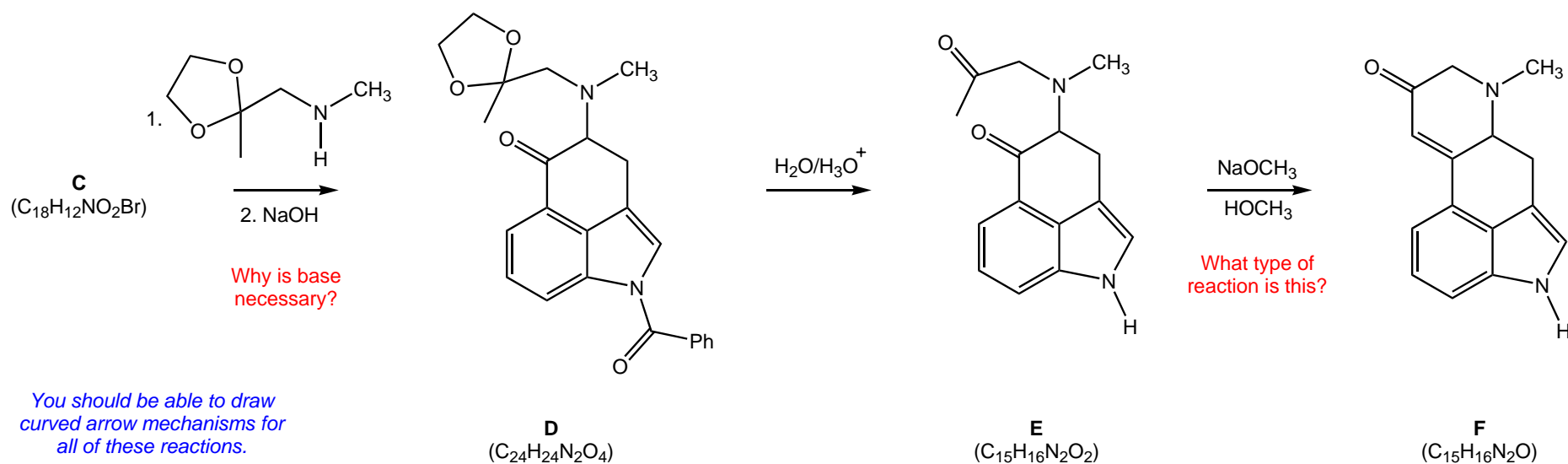
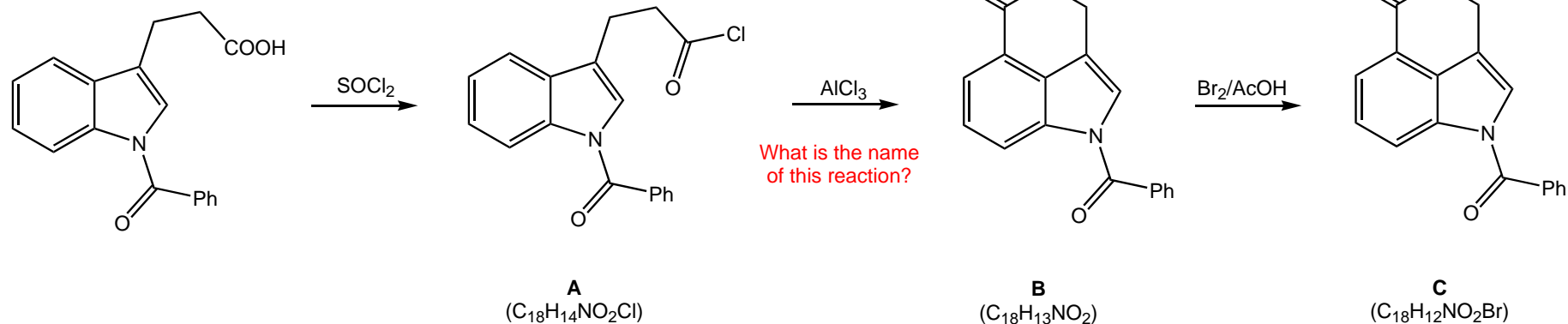
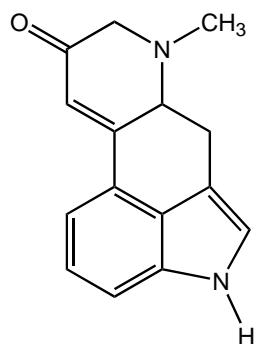


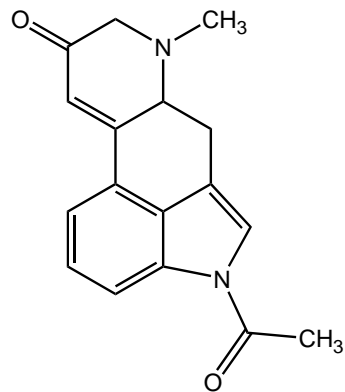
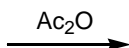
Synthesis of Lysergic Acid: KEY



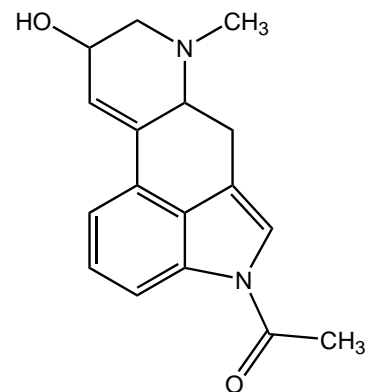
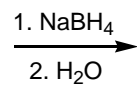
Synthesis of Lysergic Acid: KEY



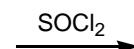
F
(C₁₅H₁₆N₂O)



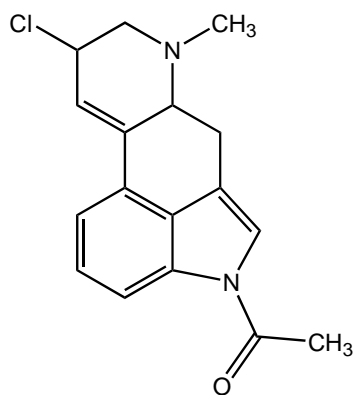
G
(C₁₇H₁₆N₂O₂)



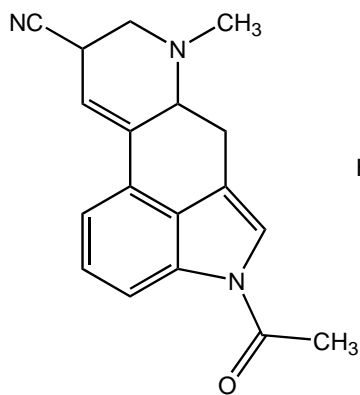
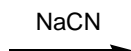
H
(C₁₇H₁₆N₂O₂)



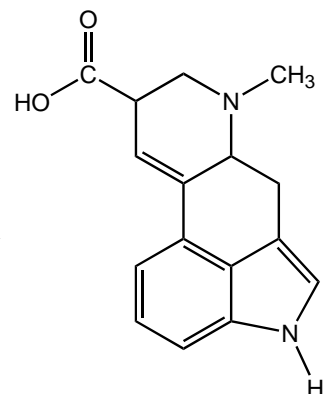
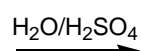
You should be able to draw curved arrow mechanisms for all of these reactions.



I
(C₁₇H₁₇N₂OCl)



J
(C₁₈H₁₇N₃O)



Lysergic Acid
(C₁₆H₁₈N₂O₂)

Finally, how would you convert lysergic acid into LSD? 1. SOCl₂ 2. Et₂NH